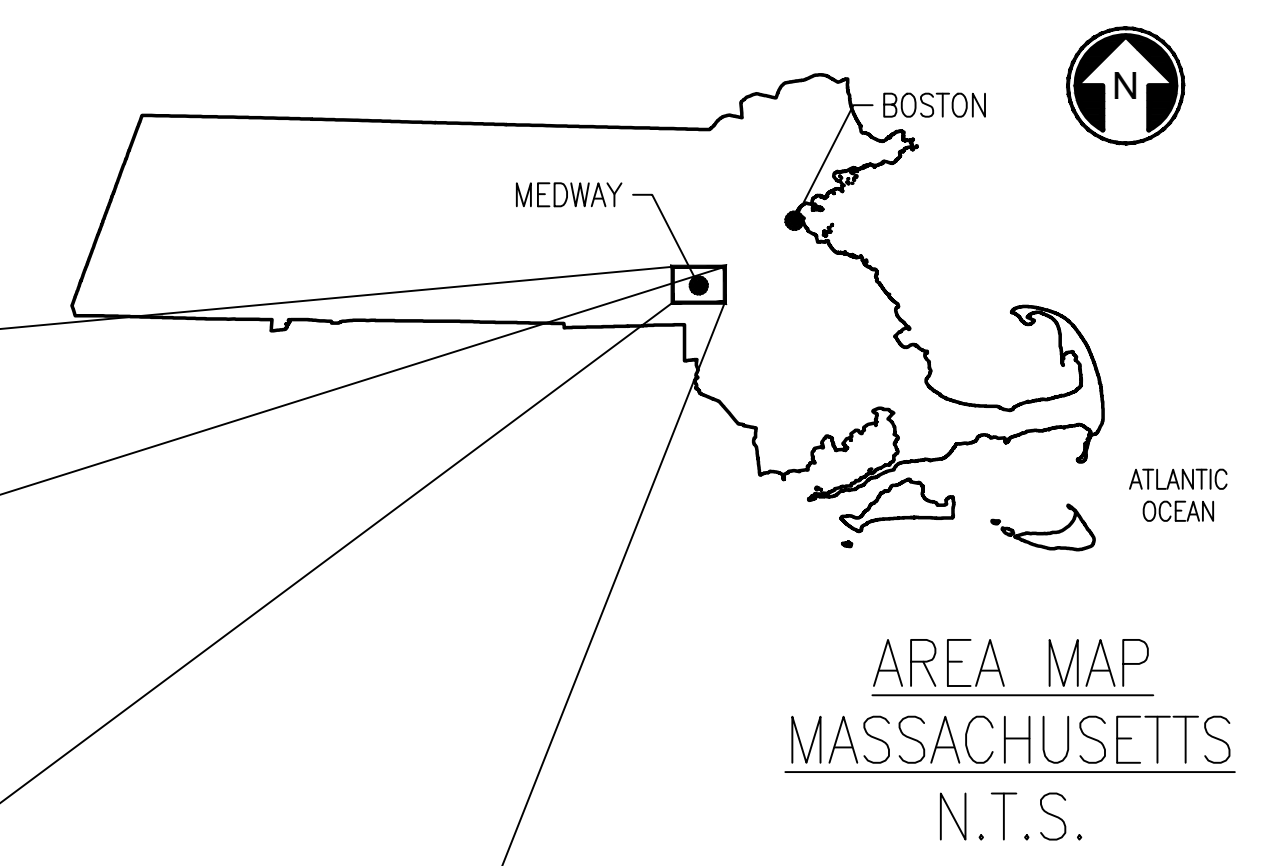


ABLE GRID MEDWAY

345kV UNDERGROUND TRANSMISSION LINE

Transmission Route
 Norfolk County, Massachusetts



MEDWAY VICINITY MAP
 N.T.S.

ABLE GRID
 PROJECT ENGINEER:
 ABLE GRID
 PROJECT NUMBER:
 POWER ENGINEERS
 PROJECT ENGINEER: THOMAS BUONOMANO
 POWER ENGINEERS
 PROJECT NUMBER: 171930



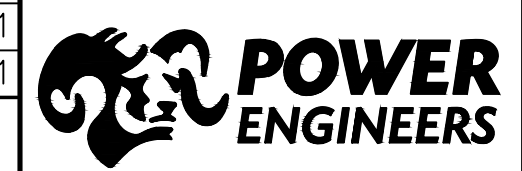
**Know what's below.
 Call before you dig.**

171930 - Medway Cover-Manifest.dwg

THIS DRAWING WAS PREPARED BY POWER ENGINEERS, INC. FOR A SPECIFIC PROJECT, TAKING INTO CONSIDERATION THE SPECIFIC AND UNIQUE REQUIREMENTS OF THE PROJECT. REUSE OF THIS DRAWING OR ANY INFORMATION CONTAINED IN THIS DRAWING FOR ANY PURPOSE IS PROHIBITED UNLESS WRITTEN PERMISSION FROM BOTH POWER AND POWER'S CLIENT IS GRANTED.

| REV | ISSUED FOR REVIEW - 30% DESIGN | DATE | DRN | DSGN | CKD | APPD | REFERENCE DRAWINGS |
|-----|--------------------------------|------------|-----|------|-----|------|--------------------|
| A | ISSUED FOR REVIEW - 30% DESIGN | 02/14/2022 | LAS | ASW | TPB | | |

| | | |
|--------------------|-----|------------|
| DSGN | ASW | 11/05/2021 |
| DRN | LAS | 11/05/2021 |
| CKD | TPB | 11/05/2021 |
| SCALE: AS NOTED | | |
| FOR 22x34 DWG ONLY | | |



| |
|--|
| ABLE GRID |
| PROPOSED 345kV UNDERGROUND TRANSMISSION LINE |
| COVER |

| | | | |
|----------------|--------|-----|---|
| JOB NUMBER | 171930 | REV | A |
| DRAWING NUMBER | G0-1 | | |

| DRAWING MANIFEST | | | |
|------------------|--|----------|-----------|
| DRAWING NO. | TITLE/DESCRIPTION | REVISION | DATE |
| G0-1 | COVER | A | 2/14/2022 |
| G0-2 | DRAWING MANIFEST AND GENERAL NOTES | A | 2/14/2022 |
| P1-1 | PLAN & PROFILE STA. 0+00 TO STA. 8+00 | A | 2/14/2022 |
| P1-2 | PLAN & PROFILE STA. 8+00 TO STA. 14+65 | A | 2/14/2022 |
| P2-1 | EASEMENT OVERVIEW | A | 2/14/2022 |
| S1-1 | TRANSITION STRUCTURE DETAILS | A | 2/14/2022 |



MEDWAY VICINITY MAP
 N.T.S.

GENERAL NOTES

- THE UTILITIES AND NATURAL FEATURES SHOWN HEREON ARE BASED ON:
 - GOOGLE EARTH 2020
 - GEOTECH BORINGS BY GZA ON 10/18/2021
 - MEDWAY BESS INTERCONNECTION DRAWING PROVIDED BY ABLE GRID ENERGY ON 10/25/2021
 - UTILITY LOCATES BY GPRS PROVIDED BY ABLE GRID ENERGY ON 10/26/2021
 - EXELON MAJOR SITE PLAN SET PROVIDED BY ABLE GRID ENERGY ON 10/26/2021
 - SITE SURVEY DONE BY LAND PLANNING, INC, PROVIDED BY ABLE GRID ENERGY ON 10/26/2021
 - OTHER FACILITIES MAY EXIST NOT DISCOVERED THROUGH THE RECORD CHECK. THE CONTRACTOR SHALL VERIFY THE EXACT LOCATION, BOTH HORIZONTAL AND VERTICAL, OF ALL UTILITIES THROUGH THE APPROPRIATE UTILITY COMPANIES. CALL BEFORE YOU DIG, 811 OR 1-888-344-7233.
- STATE PLANE COORDINATE (HORIZONTAL DATUM): REFERENCES MASSACHUSETTS PLAN COORDINATE SYSTEM - NAD83 1983, US FOOT.
- STATE PLANE COORDINATE (VERTICAL DATUM): NAVD 1988. THE COORDINATE SYSTEM THAT THIS SURVEY WAS BASED UPON IS STATE PLANE NAD 88.
- VERTICAL LOCATION OF SUBSURFACE UTILITY LINES ARE BASED ON ASSUMED DEPTHS USING BEST AVAILABLE INFORMATION AND ARE APPROXIMATE AND MAY VARY FROM THE ACTUAL VERTICAL LOCATIONS. BUILDING SERVICE CONNECTIONS (ELECTRIC, GAS, TELEPHONE, WATER AND SANITARY) ARE NOT SHOWN. CONTRACTOR IS TO ASSUME SERVICES ARE PRESENT TO ALL BUILDINGS.
- ALL WORK SHALL BE PERFORMED WITHIN THE DESIGNATED UTILITY PROPERTY.
- ALL AREAS DISTURBED BY CONSTRUCTION SHALL BE RETURNED TO THE ORIGINAL CONDITION OR BETTER AS DETERMINED BY OWNER AND IN ACCORDANCE WITH THE APPLICABLE LOCAL AND/OR STATE REQUIREMENTS.
- CIVIL CONTRACTOR SHALL HAUL AWAY ALL UNUSED EXCAVATED MATERIAL TO PERMITTED SOIL DISPOSAL SITE.
- CIVIL CONTRACTOR SHALL BE RESPONSIBLE FOR REPLACING AND REPAIRING ALL PAVEMENT DISTURBED DUE TO THE CONSTRUCTION. ALL REPLACEMENT AND REPAIRS SHALL BE PERFORMED IN ACCORDANCE WITH THE APPLICABLE LOCAL AND/OR STATE REQUIREMENTS.
- CIVIL CONTRACTOR SHALL BE RESPONSIBLE FOR REPAIRING ANY & ALL UTILITIES AND FACILITIES DAMAGED DURING CONSTRUCTION IN ACCORDANCE WITH THE APPLICABLE UTILITY SPECIFICATION, LOCAL AND/OR STATE REQUIREMENTS.
- CIVIL CONTRACTOR SHALL BE RESPONSIBLE FOR REMOVING ABANDONED CONDUIT AS REQUIRED IN ACCORDANCE WITH THE APPLICABLE LOCAL AND/OR STATE REQUIREMENTS. CUT AND CAP ABANDONED UTILITIES (DO NOT CUT GAS LINES).
- CIVIL CONTRACTOR SHALL BE RESPONSIBLE FOR BUILDING TEMPORARY AND PERMANENT ACCESS ROADS. ALL TEMPORARY ACCESS ROADS WILL BE REMOVED AND ORIGINAL GRADE WILL BE RESTORED WHEN WORK IS COMPLETED.
- CIVIL CONTRACTOR SHALL BE RESPONSIBLE FOR IMPLEMENTING BEST MANAGEMENT PRACTICES FOR CONTROLLING EROSION AND SEDIMENTATION.
- CIVIL CONTRACTOR SHALL RESTORE GRADE TO PRE-CONSTRUCTION ELEVATIONS UNLESS OTHERWISE NOTED ON THE DRAWINGS.
- DUCT BANK SHALL MAINTAIN A COVER DEPTH OF 3'-0" BELOW GRADE.
- ALL VERTICAL RADII ARE 400', AND HORIZONTAL RADII ARE 500' UNLESS OTHERWISE NOTED.
- DUCT BANK SHALL MAINTAIN MINIMUM HORIZONTAL CLEARANCE OF 1'-0" AND A MINIMUM VERTICAL CLEARANCE OF 1'-0" OVER OR UNDER EXISTING UTILITIES, UNLESS OTHERWISE SHOWN ON DRAWINGS.

LEGEND

- CLF CHAIN LINK FENCE
- CB/DH CONCRETE BOUND W/ DRILL HOLE
- FND FOUND
- IR/IP IRON ROD/PIPE
- LIGHT POLE
- UP UTILITY POLE
- CMP CORRUGATED METAL PIPE
- CBN CATCH BASIN
- RCP REINFORCED CONCRETE PIPE
- EOP EDGE OF PAVEMENT
- GP GATE POST
- SIGN
- G GAS
- E UNDERGROUND ELECTRIC
- OHW OVERHEAD WIRES
- 2-3 • WETLAND FLAGS
- 100' WETLAND BUFFER ZONE
- 200' RIVERFRONT AREA



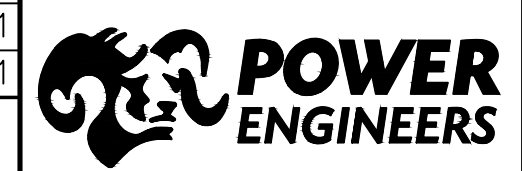
Know what's below.
 Call before you dig.

171930 - Medway Cover-Manifest.dwg

THIS DRAWING WAS PREPARED BY POWER ENGINEERS, INC. FOR A SPECIFIC PROJECT, TAKING INTO CONSIDERATION THE SPECIFIC AND UNIQUE REQUIREMENTS OF THE PROJECT. REUSE OF THIS DRAWING OR ANY INFORMATION CONTAINED IN THIS DRAWING FOR ANY PURPOSE IS PROHIBITED UNLESS WRITTEN PERMISSION FROM BOTH POWER AND POWER'S CLIENT IS GRANTED.

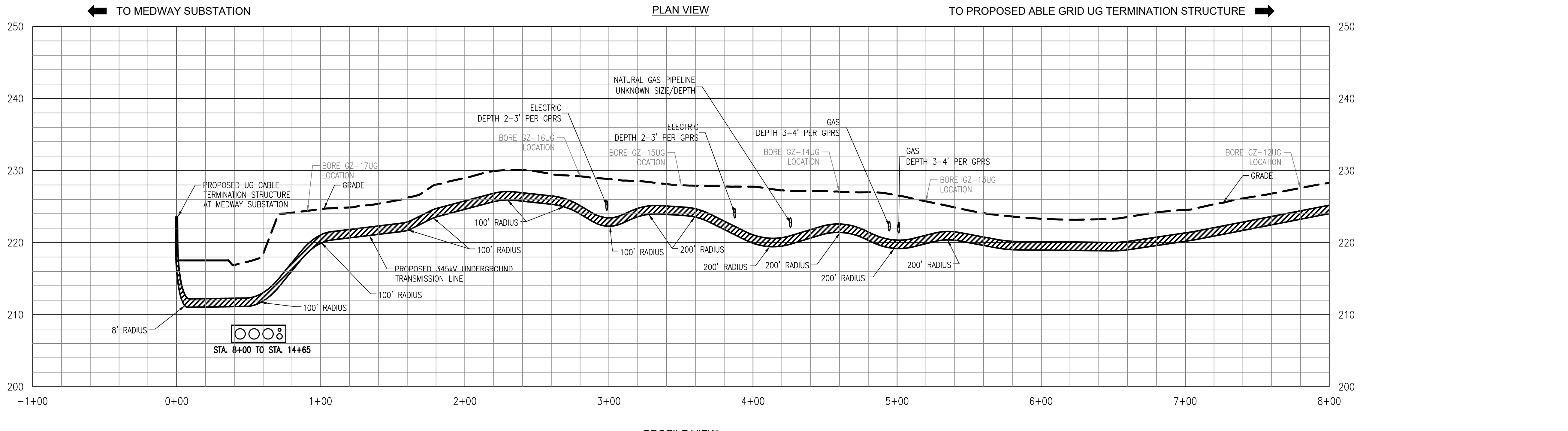
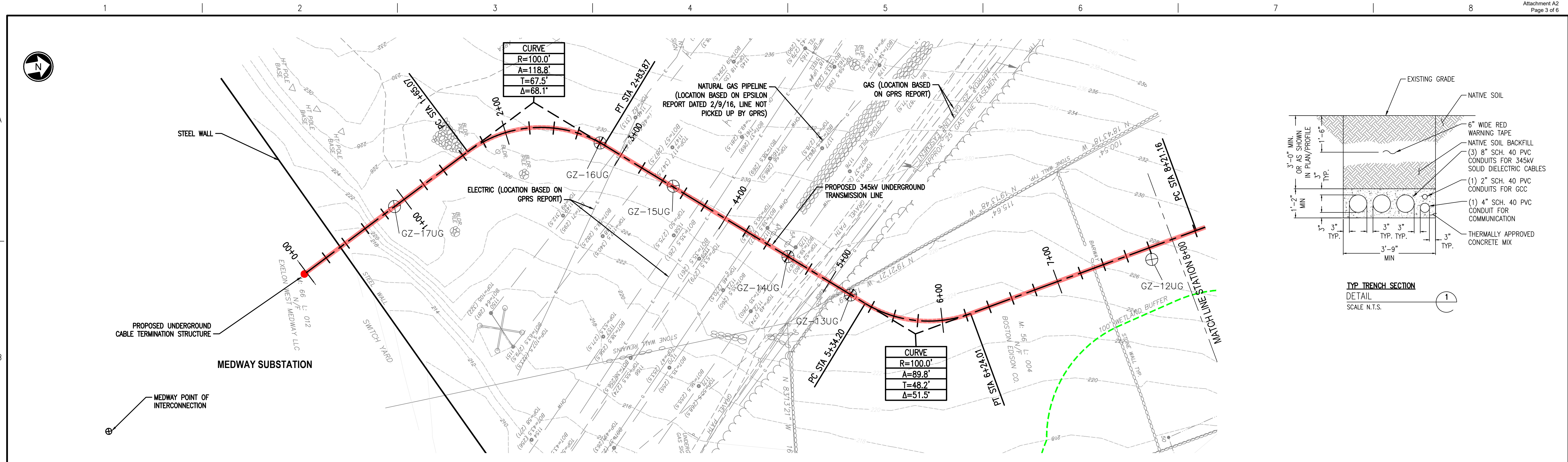
| REV | ISSUED FOR REVIEW - 30% DESIGN | DATE | DRN | DSGN | CKD | APPD | REFERENCE DRAWINGS |
|-----|--------------------------------|------------|-----|------|-----|------|--------------------|
| A | ISSUED FOR REVIEW - 30% DESIGN | 02/14/2022 | LAS | ASW | TPB | | |

| | | |
|--------------------|-----|------------|
| DSGN | ASW | 11/05/2021 |
| DRN | LAS | 11/05/2021 |
| CKD | TPB | 11/05/2021 |
| SCALE: AS NOTED | | |
| FOR 22x34 DWG ONLY | | |



| | |
|--|--|
| ABLE GRID | |
| PROPOSED 345kV UNDERGROUND TRANSMISSION LINE | |
| LEGEND AND DRAWING MANIFEST | |

| | |
|----------------|-----|
| JOB NUMBER | REV |
| 171930 | A |
| DRAWING NUMBER | |
| G0-2 | |



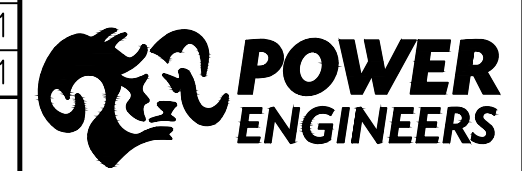
- NOTES**
1. THE UTILITIES AND NATURAL FEATURES SHOWN HEREON ARE BASED ON FIELD SURVEYS, AERIAL PHOTOGRAPHY AND RECORD DOCUMENTS. OTHER FACILITIES MAY EXIST NOT DISCOVERED THROUGH THE RECORD CHECK. THE CONTRACTOR SHALL VERIFY THE EXACT LOCATION, BOTH HORIZONTAL AND VERTICAL, OF ALL UTILITIES THROUGH THE APPROPRIATE UTILITY COMPANIES. 811 OR 1-888-344-7233.
 2. VERTICAL LOCATION OF SUBSURFACE UTILITY LINES ARE BASED ON ASSUMED DEPTHS AND MAY VARY FROM THE ACTUAL VERTICAL LOCATIONS.
 3. ALL PROFILE VERTICAL CURVES ARE 400' RADIUS UNLESS OTHERWISE NOTED.
 4. PROPERTY LINES ARE APPROXIMATE FOR ILLUSTRATIVE PURPOSES.



THIS DRAWING WAS PREPARED BY POWER ENGINEERS, INC. FOR A SPECIFIC PROJECT, TAKING INTO CONSIDERATION THE SPECIFIC AND UNIQUE REQUIREMENTS OF THE PROJECT. REUSE OF THIS DRAWING OR ANY INFORMATION CONTAINED IN THIS DRAWING FOR ANY PURPOSE IS PROHIBITED UNLESS WRITTEN PERMISSION FROM BOTH POWER AND POWER'S CLIENT IS GRANTED.

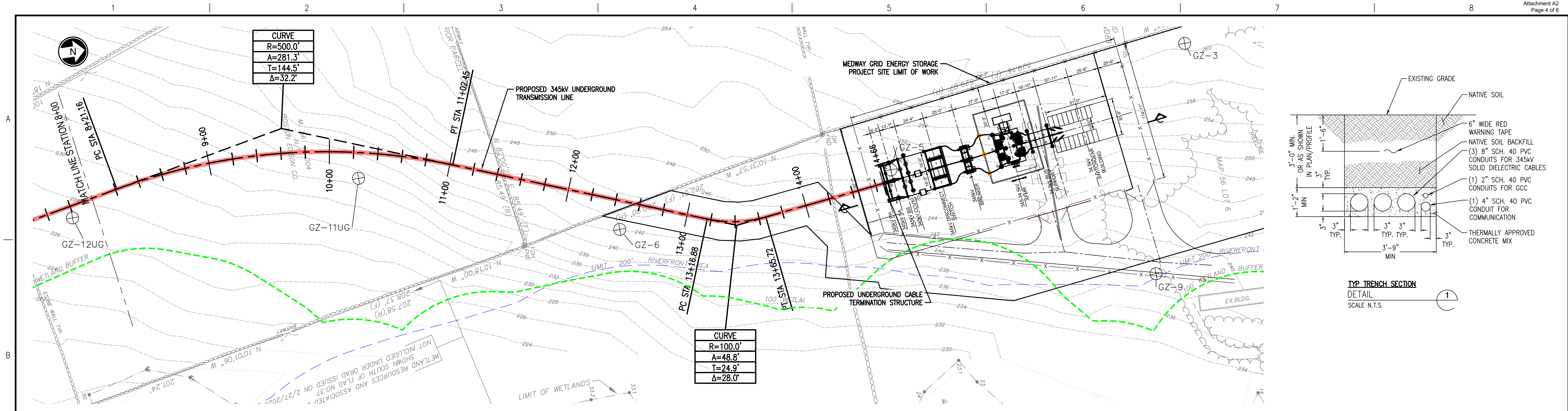
| REV | REVISIONS | DATE | DRN | DSGN | CKD | APPD | REFERENCE DRAWINGS |
|-----|--------------------------------|------------|-----|------|-----|------|--------------------|
| A | ISSUED FOR REVIEW - 30% DESIGN | 02/14/2022 | LAS | ASW | TPB | | |

| | | |
|--------------------|-----|------------|
| DSGN | ASW | 11/05/2021 |
| DRN | LAS | 11/05/2021 |
| CKD | TPB | 11/05/2021 |
| SCALE: AS NOTED | | |
| FOR 22x34 DWG ONLY | | |

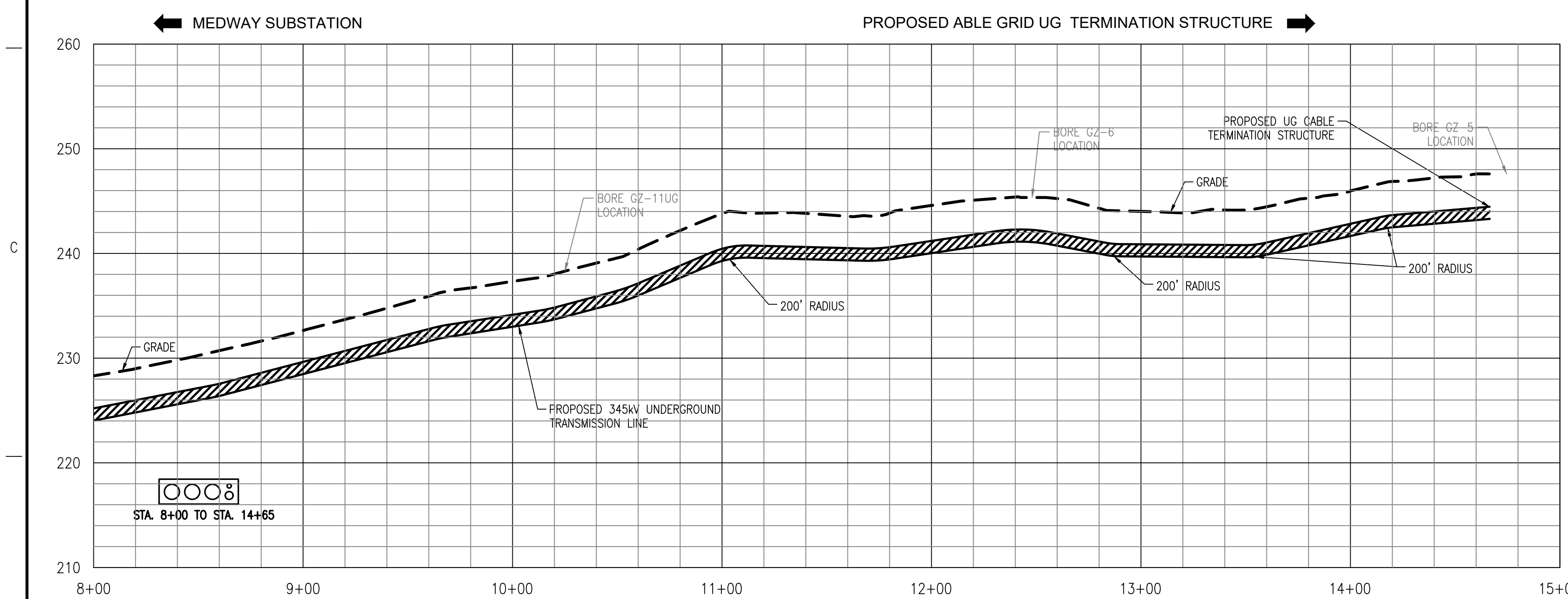


| | | | |
|--|--|----------------|------|
| ABLE GRID | | JOB NUMBER | REV |
| PROPOSED 345kV UNDERGROUND TRANSMISSION LINE | | 171930 | A |
| PLAN & PROFILE STA. 0+00 TO STA. 8+00 | | DRAWING NUMBER | P1-1 |

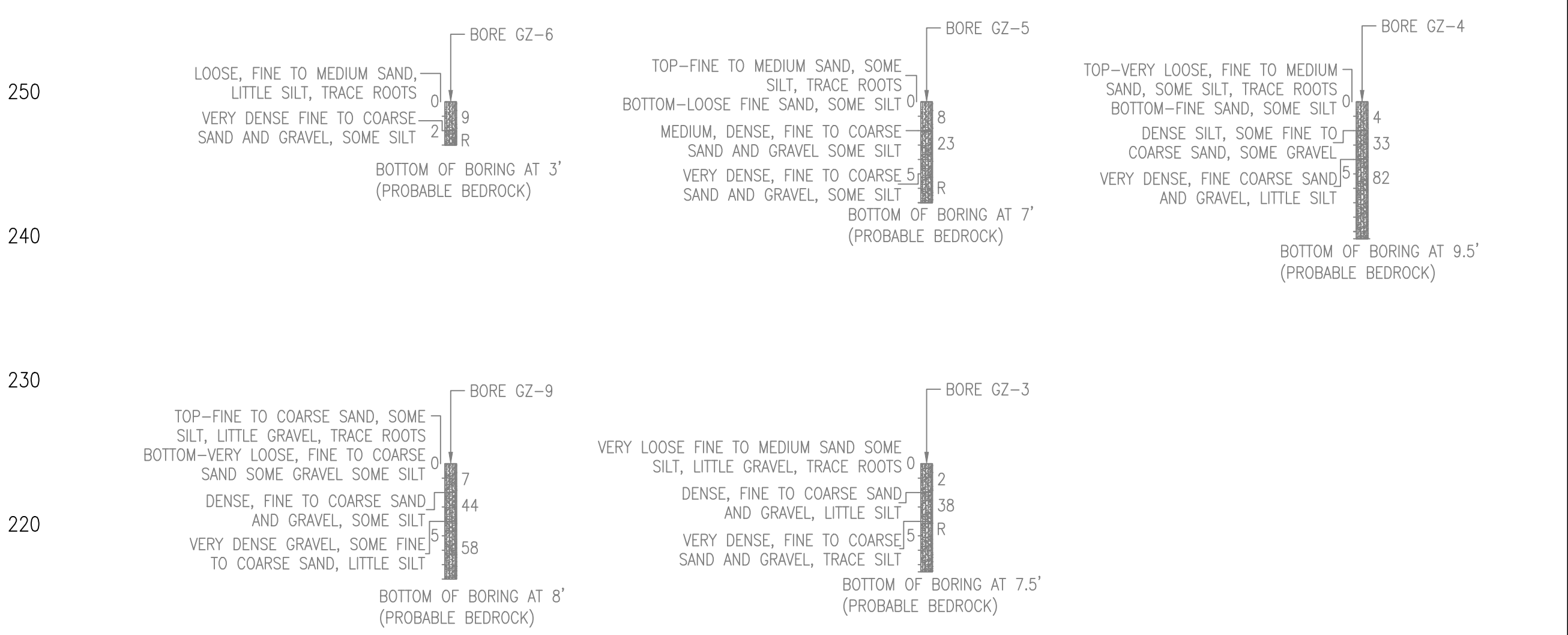
171930 - Medway P&P Rev A.dwg



PLAN VIEW



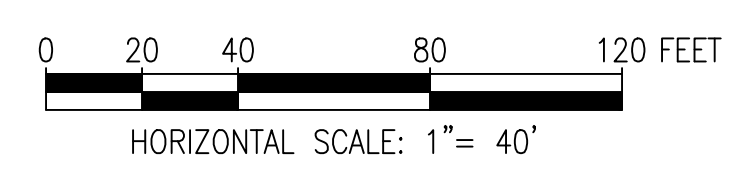
PROFILE VIEW



BORE PROFILES

NOTES

1. THE UTILITIES AND NATURAL FEATURES SHOWN HEREON ARE BASED ON FIELD SURVEYS, AERIAL PHOTOGRAPHY AND RECORD DOCUMENTS. OTHER FACILITIES MAY EXIST NOT DISCOVERED THROUGH THE RECORD CHECK. THE CONTRACTOR SHALL VERIFY THE EXACT LOCATION, BOTH HORIZONTAL AND VERTICAL, OF ALL UTILITIES THROUGH THE APPROPRIATE UTILITY COMPANIES. 811 OR 1-888-344-7233.
2. VERTICAL LOCATION OF SUBSURFACE UTILITY LINES ARE BASED ON ASSUMED DEPTHS AND MAY VARY FROM THE ACTUAL VERTICAL LOCATIONS.
3. ALL PROFILE VERTICAL CURVES ARE 400' RADIUS UNLESS OTHERWISE NOTED.
4. PROPERTY LINES ARE APPROXIMATE FOR ILLUSTRATIVE PURPOSES.



LEGEND

| | |
|--|--------------------------|
| | 100' WETLAND BUFFER ZONE |
| | 200' RIVERFRONT AREA |

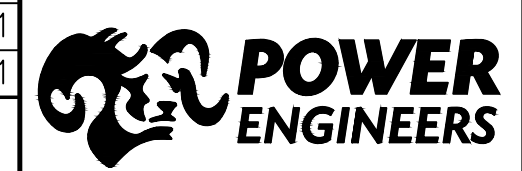


**Know what's below.
 Call before you dig.**

THIS DRAWING WAS PREPARED BY POWER ENGINEERS, INC. FOR A SPECIFIC PROJECT, TAKING INTO CONSIDERATION THE SPECIFIC AND UNIQUE REQUIREMENTS OF THE PROJECT. REUSE OF THIS DRAWING OR ANY INFORMATION CONTAINED IN THIS DRAWING FOR ANY PURPOSE IS PROHIBITED UNLESS WRITTEN PERMISSION FROM BOTH POWER AND POWER'S CLIENT IS GRANTED.

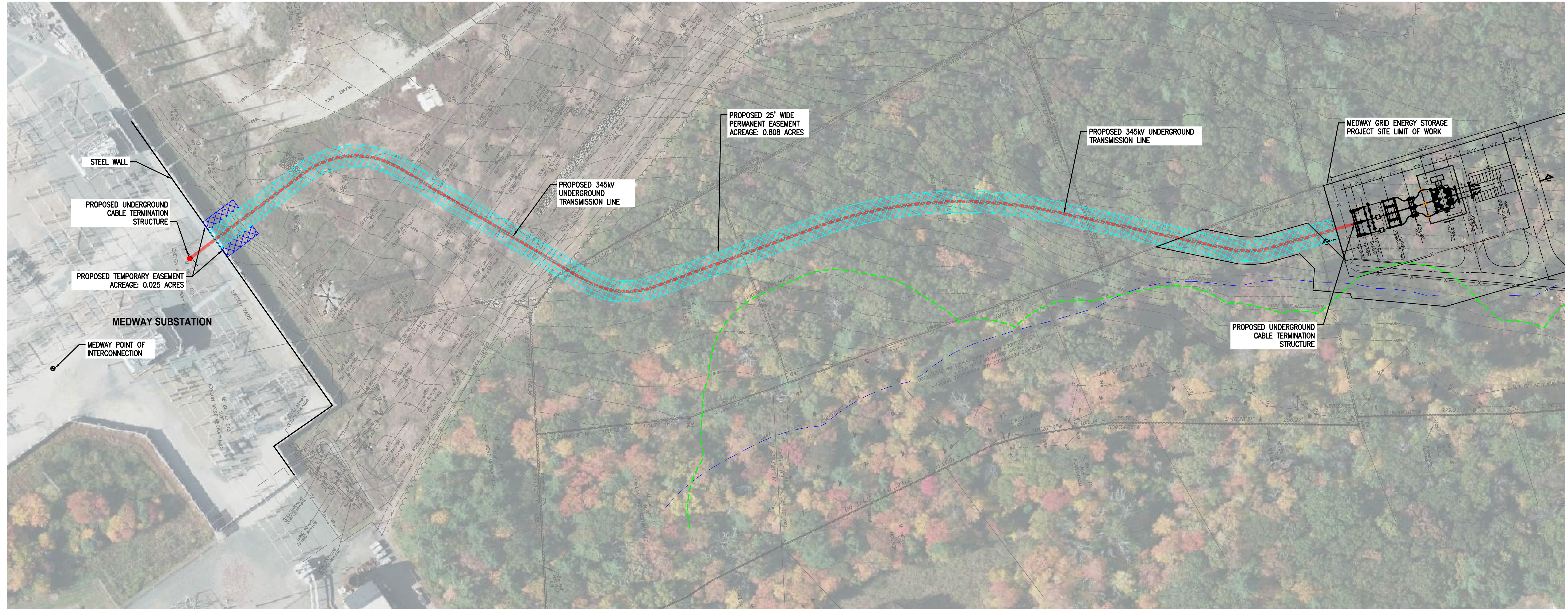
| REV | REVISIONS | DATE | DRN | DSGN | CKD | APPD | REFERENCE DRAWINGS |
|-----|--------------------------------|------------|-----|------|-----|------|--------------------|
| A | ISSUED FOR REVIEW - 30% DESIGN | 02/14/2022 | LAS | ASW | TPB | | |

| | | |
|--------------------|-----|------------|
| DSGN | ASW | 11/05/2021 |
| DRN | LAS | 11/05/2021 |
| CKD | TPB | 11/05/2021 |
| SCALE: AS NOTED | | |
| FOR 22x34 DWG ONLY | | |



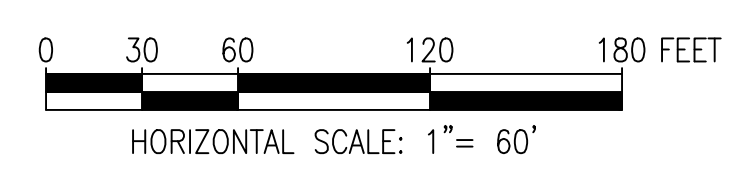
| | | | |
|--|--|----------------|-----|
| ABLE GRID | | JOB NUMBER | REV |
| PROPOSED 345kV UNDERGROUND TRANSMISSION LINE | | 171930 | A |
| PLAN & PROFILE STA. 8+00 TO STA. 14+65 | | DRAWING NUMBER | |
| | | P1-2 | |

171930 - Medway P&P Rev A.dwg



NOTES

1. THE UTILITIES AND NATURAL FEATURES SHOWN HEREON ARE BASED ON FIELD SURVEYS, AERIAL PHOTOGRAPHY AND RECORD DOCUMENTS. OTHER FACILITIES MAY EXIST NOT DISCOVERED THROUGH THE RECORD CHECK. THE CONTRACTOR SHALL VERIFY THE EXACT LOCATION, BOTH HORIZONTAL AND VERTICAL, OF ALL UTILITIES THROUGH THE APPROPRIATE UTILITY COMPANIES. 811 OR 1-888-344-7233.
2. VERTICAL LOCATION OF SUBSURFACE UTILITY LINES ARE BASED ON ASSUMED DEPTHS AND MAY VARY FROM THE ACTUAL VERTICAL LOCATIONS.
3. ALL PROFILE VERTICAL CURVES ARE 400' RADIUS UNLESS OTHERWISE NOTED.
4. PROPERTY LINES ARE APPROXIMATE FOR ILLUSTRATIVE PURPOSES.



LEGEND

| | |
|--|--------------------------|
| | 100' WETLAND BUFFER ZONE |
| | 200' RIVERFRONT AREA |

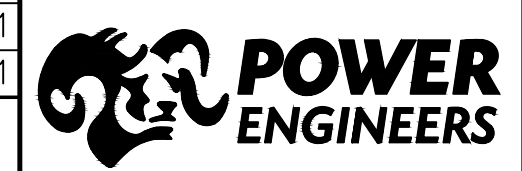


**Know what's below.
 Call before you dig.**

THIS DRAWING WAS PREPARED BY POWER ENGINEERS, INC. FOR A SPECIFIC PROJECT, TAKING INTO CONSIDERATION THE SPECIFIC AND UNIQUE REQUIREMENTS OF THE PROJECT. REUSE OF THIS DRAWING OR ANY INFORMATION CONTAINED IN THIS DRAWING FOR ANY PURPOSE IS PROHIBITED UNLESS WRITTEN PERMISSION FROM BOTH POWER AND POWER'S CLIENT IS GRANTED.

| REV | REVISIONS | DATE | DRN | DSGN | CKD | APPD | REFERENCE DRAWINGS |
|-----|--------------------------------|------------|-----|------|-----|------|--------------------|
| A | ISSUED FOR REVIEW - 30% DESIGN | 02/14/2022 | LAS | ASW | TPB | | |

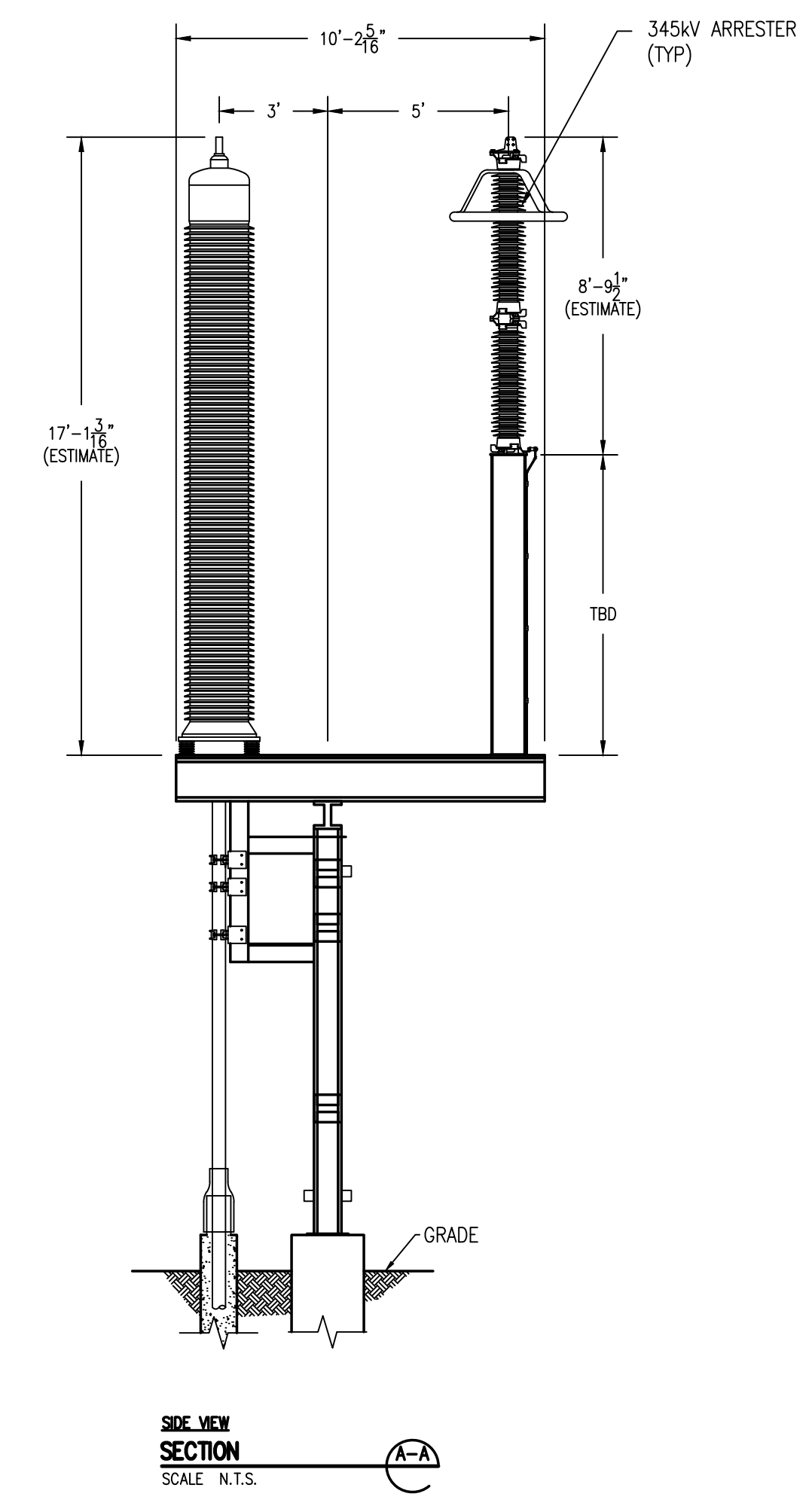
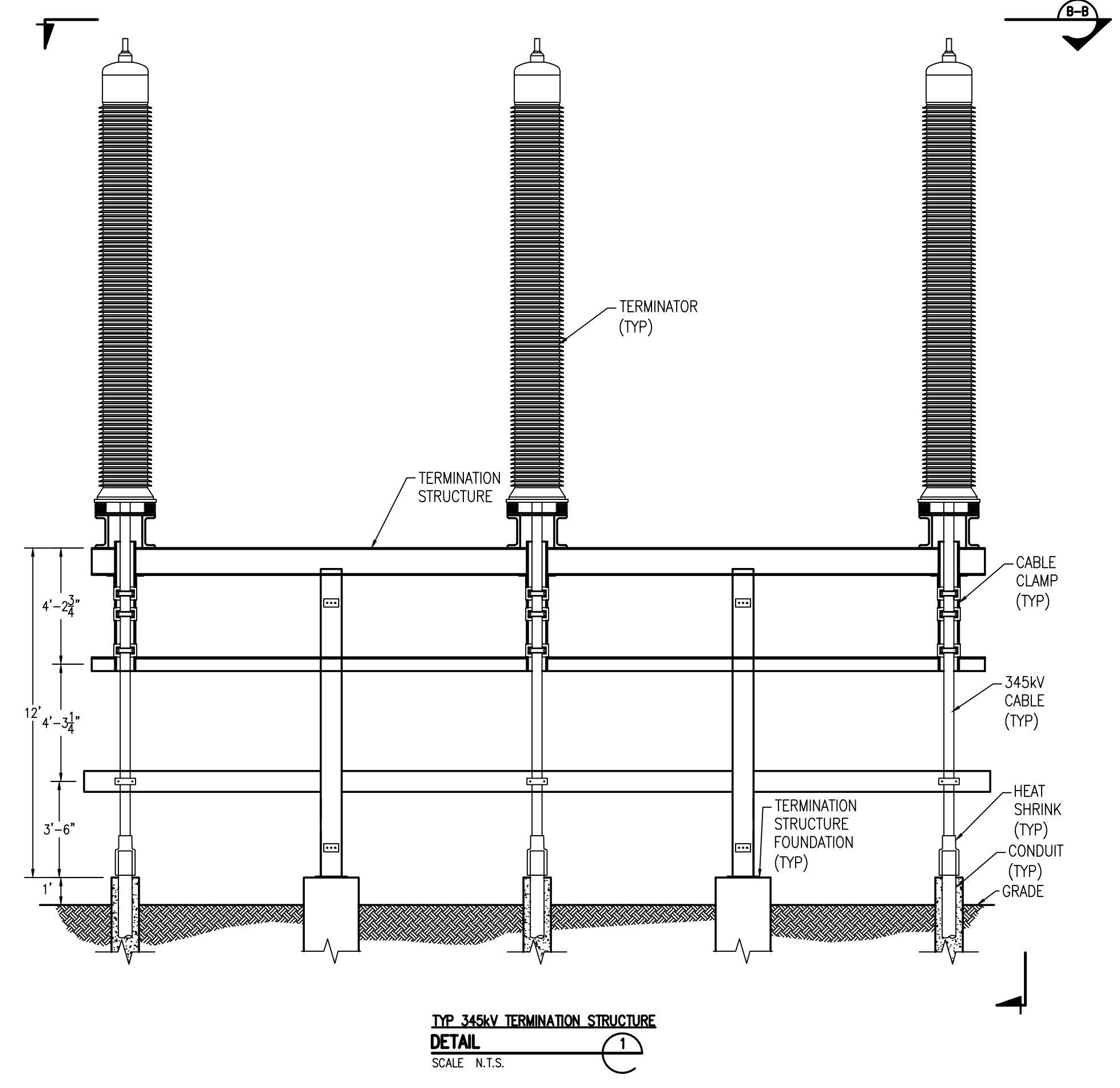
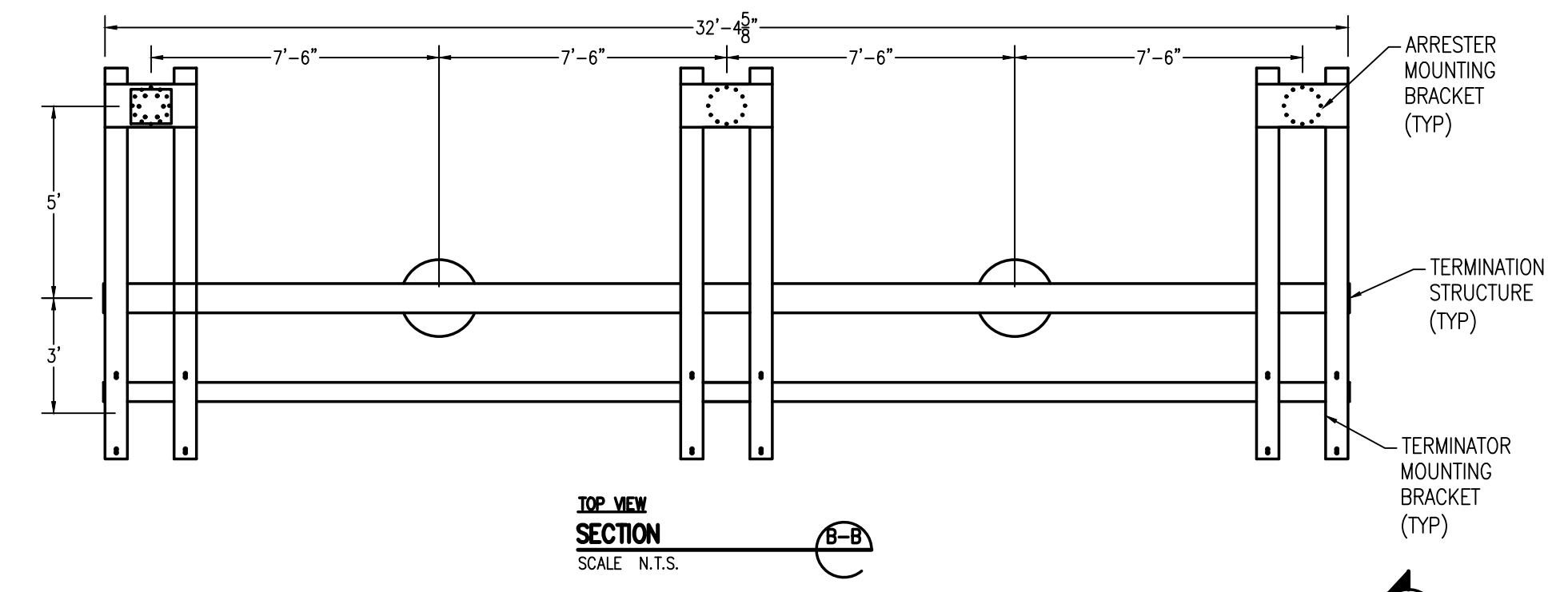
| | | |
|--------------------|-----|------------|
| DSGN | ASW | 11/05/2021 |
| DRN | LAS | 11/05/2021 |
| CKD | TPB | 11/05/2021 |
| SCALE: AS NOTED | | |
| FOR 22x34 DWG ONLY | | |



| |
|--|
| ABLE GRID |
| PROPOSED 345kV UNDERGROUND TRANSMISSION LINE |
| EASEMENT OVERVIEW |

| | |
|----------------|-----|
| JOB NUMBER | REV |
| 171930 | A |
| DRAWING NUMBER | |
| P2-1 | |

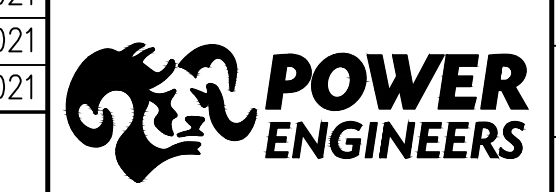
171930 - Medway P&P Rev A.dwg



171930 - Medway Cover-Manifest.dwg

THIS DRAWING WAS PREPARED BY POWER ENGINEERS, INC. FOR A SPECIFIC PROJECT, TAKING INTO CONSIDERATION THE SPECIFIC AND UNIQUE REQUIREMENTS OF THE PROJECT. REUSE OF THIS DRAWING OR ANY INFORMATION CONTAINED IN THIS DRAWING FOR ANY PURPOSE IS PROHIBITED UNLESS WRITTEN PERMISSION FROM BOTH POWER AND POWER'S CLIENT IS GRANTED.

| | | | | | | | | | | |
|--------------------|--------------------------------|------------|------------|-----|------|-----|------|--------------------|--|--|
| DSGN | ASW | 11/05/2021 | | | | | | | | |
| DRN | LAS | 11/05/2021 | | | | | | | | |
| CKD | TPB | 11/05/2021 | | | | | | | | |
| SCALE: AS NOTED | | | | | | | | | | |
| FOR 22x34 DWG ONLY | | | | | | | | | | |
| REV | ISSUED FOR REVIEW - 30% DESIGN | | 02/14/2022 | LAS | ASW | TPB | | | | |
| | REVISIONS | | DATE | DRN | DSGN | CKD | APPD | REFERENCE DRAWINGS | | |



| | |
|--|--|
| ABLE GRID | |
| PROPOSED 345KV UNDERGROUND TRANSMISSION LINE | |
| TERMINATION STRUCTURE DETAILS | |

| | |
|----------------|-----|
| JOB NUMBER | REV |
| 171930 | A |
| DRAWING NUMBER | |
| S1-1 | |