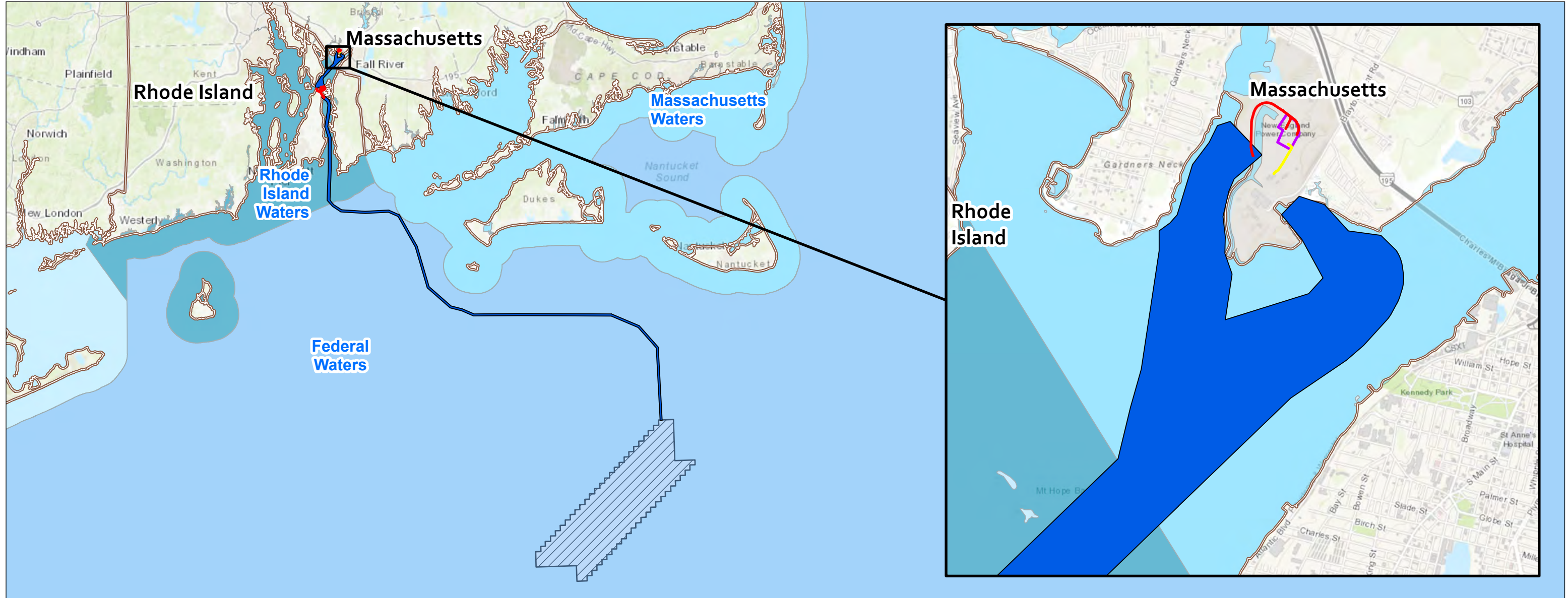


ATTACHMENT A – FIGURES


Mayflower Wind Brayton Point Project

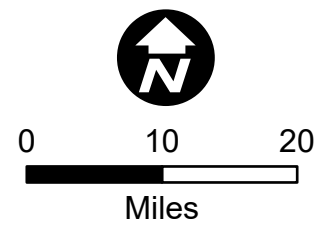
SOMERSET, MA
 Massachusetts Energy Facilities Siting Board

Date: May 2022





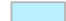






PREPARED FOR:

 **MAYFLOWER WIND**
 101 Federal Street
 Boston, MA 02110



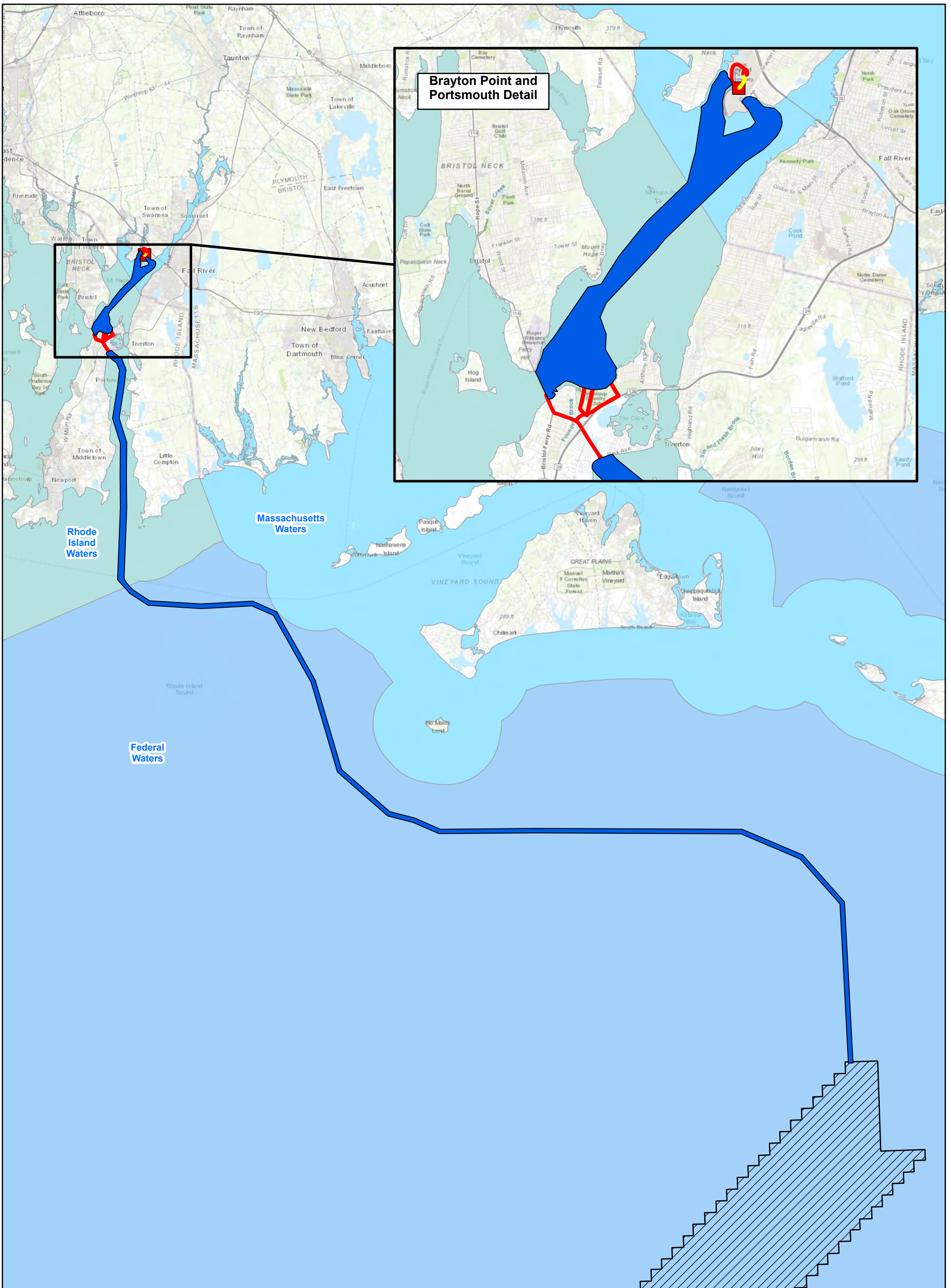
INDEX
 Analysis
 Project Figures

-  Onshore Export Cable Route (Preferred)
-  Onshore 345kV Transmission Route
-  HVDC Converter Station Site
-  Brayton Point Offshore Export Cable Corridor
-  Massachusetts Waters
-  Rhode Island Waters
-  Federal Waters
-  State Boundary
-  Mayflower Wind Lease Area OCS A-0521

PREPARED BY:

 **POWER ENGINEERS**

2 Hampshire Street Suite 301
 Foxborough, MA 02035



Brayton Point and Portsmouth Detail

- Brayton Point POI
- Onshore 345kV Transmission Route
- Onshore Export Cable Route (Preferred)
- Brayton Point Offshore Export Cable Corridor
- Mayflower Wind Lease Area OCS A-0521
- Federal Waters
- Massachusetts Waters
- Rhode Island Waters



MAYFLOWER WIND
OFFSHORE WIND PROJECT
SOMERSET, MA AND PORTSMOUTH, RI
FIGURE 1-1
PROJECT AND CLEAN ENERGY
RESOURCE OVERVIEW

0 5 10
Miles

Date: 5/25/2022



	Brayton Point POI		Preferred Route (Lee River Approach)		HVDC Converter Station Site
	Onshore 345kV Transmission Route		Noticed Alternative (Taunton River Approach)		
	Onshore Export Cable Route (Preferred)				
	Onshore Export Cable Route (Noticed Alternative)				

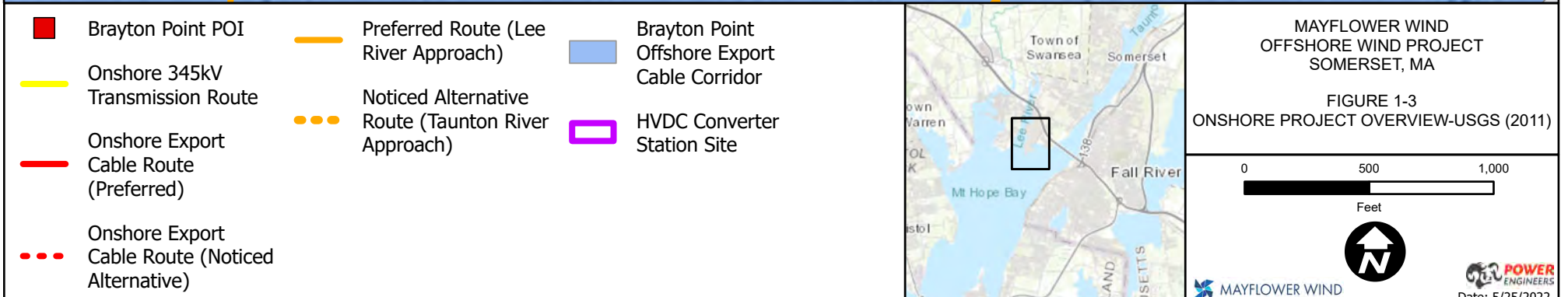
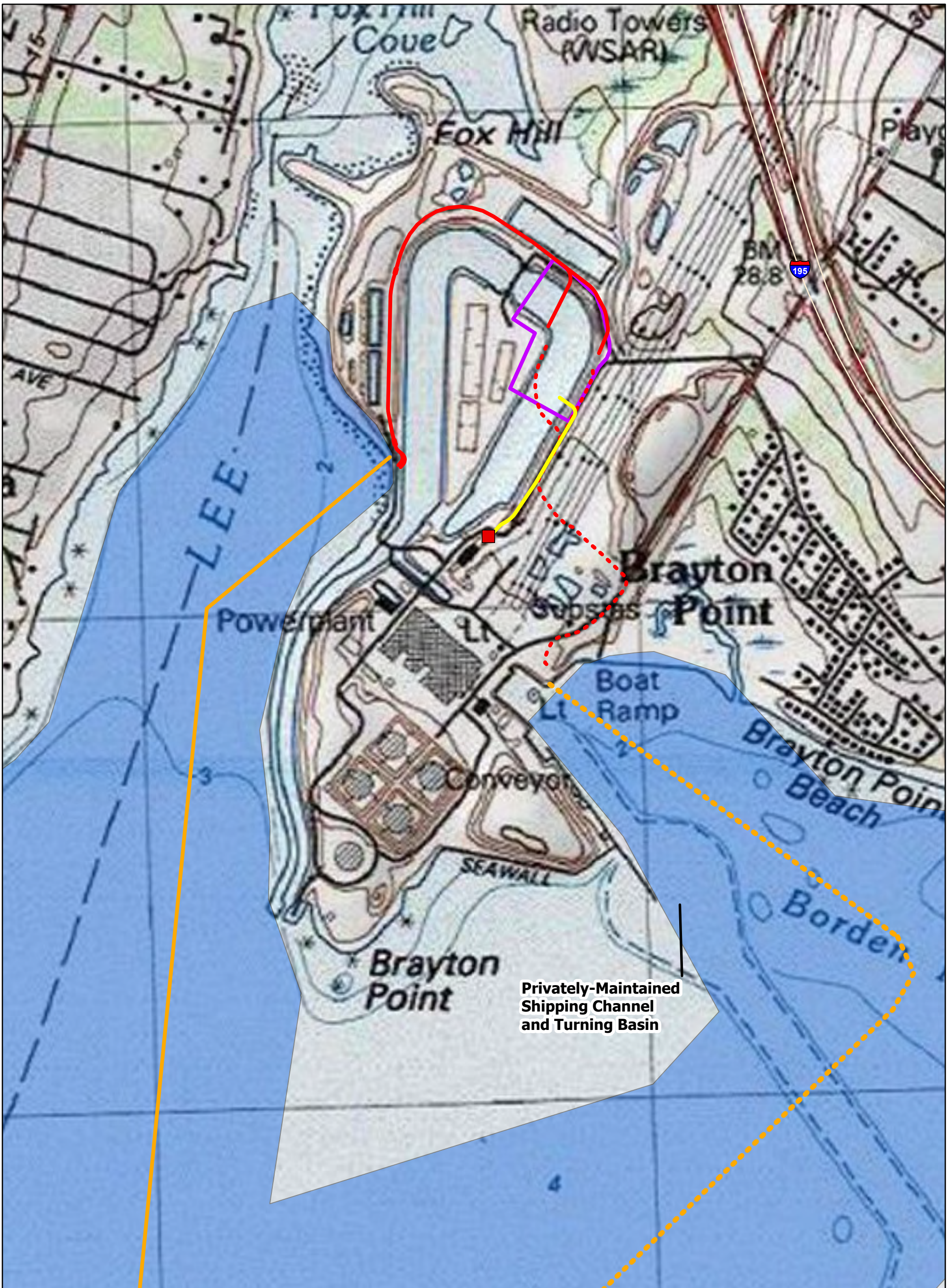
MAYFLOWER WIND
OFFSHORE WIND PROJECT
SOMERSET, MA

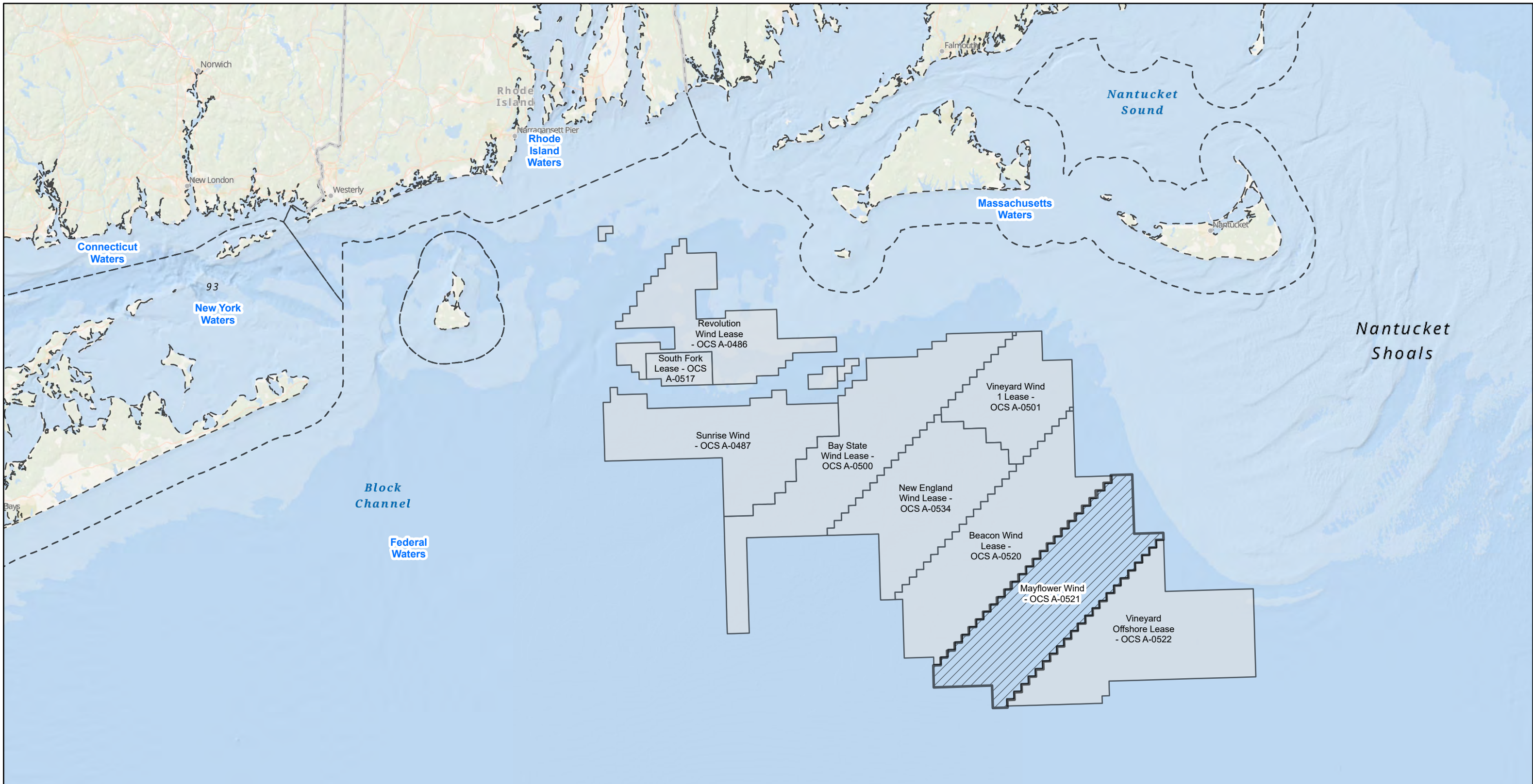
FIGURE 1-2
ONSHORE PROJECT OVERVIEW



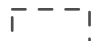
0 500 1,000
Feet

MAYFLOWER WIND

Date: 5/9/2022





-  Mayflower Wind LLC - OCS A-0521
-  Wind Lease Area
-  State Water Boundary



MAYFLOWER WIND
OFFSHORE WIND PROJECT
SOMERSET, MA AND PORTSMOUTH, RI

FIGURE 1-4
MA-RI WIND ENERGY AREA

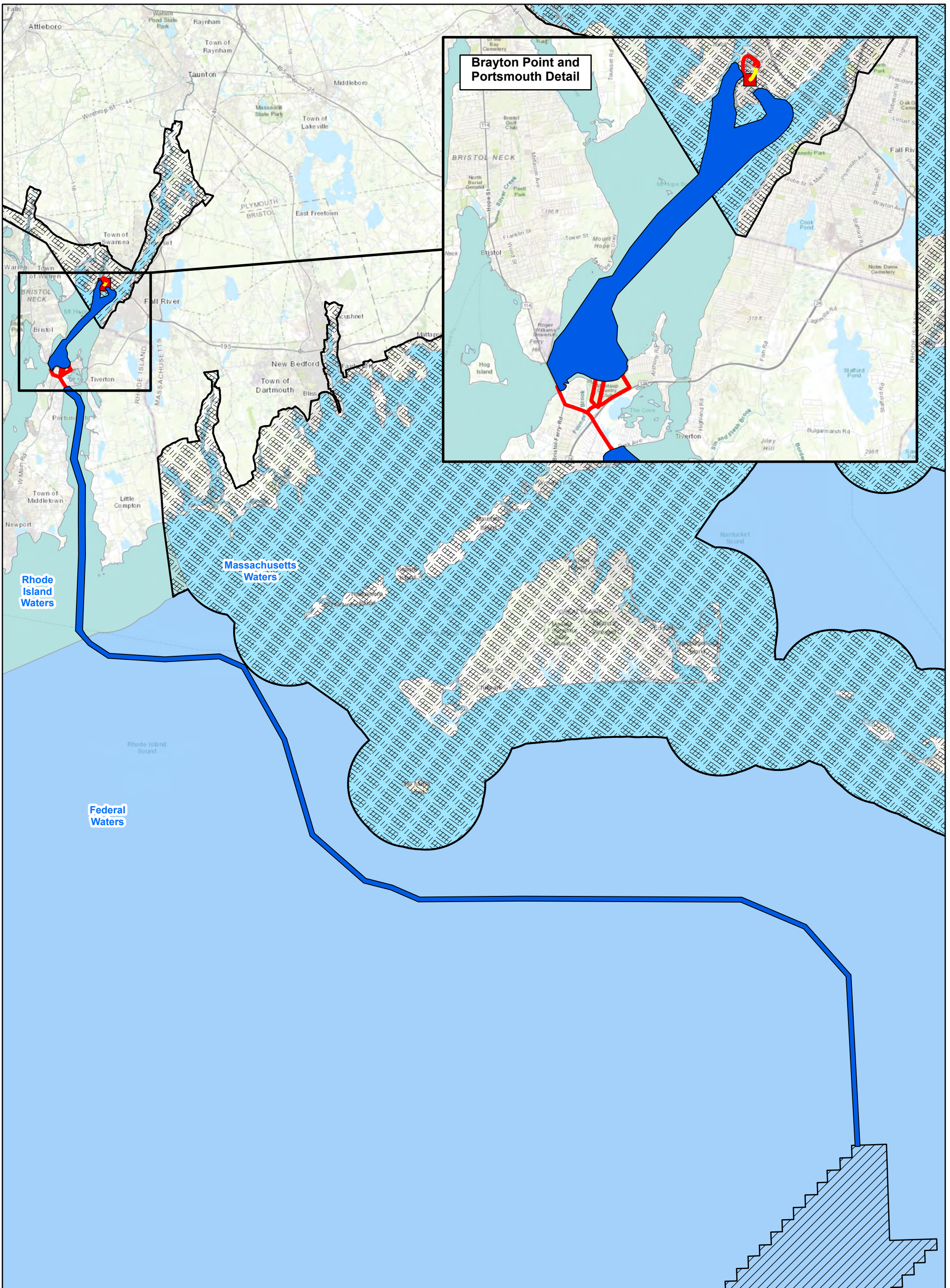
0 5 10 15



 MAYFLOWER WIND

 POWER ENGINEERS

Date: 5/25/2022



Brayton Point and Portsmouth Detail

- Brayton Point POI
- Onshore 345kV Transmission Route
- Onshore Export Cable Route (Preferred)
- Brayton Point Offshore Export Cable Corridor
- Mayflower Wind Lease Area OCS A-0521
- MA Coastal Zone Management Agency Boundary (2011)
- Federal Waters
- Massachusetts Waters
- Rhode Island Waters



**MAYFLOWER WIND
OFFSHORE WIND PROJECT
SOMERSET, MA AND PORTSMOUTH, RI**

**FIGURE 1-5
COASTAL ZONE BOUNDARY**

0 5 10

Miles

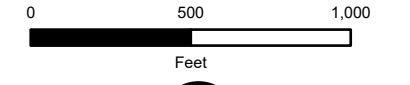
Date: 5/25/2022

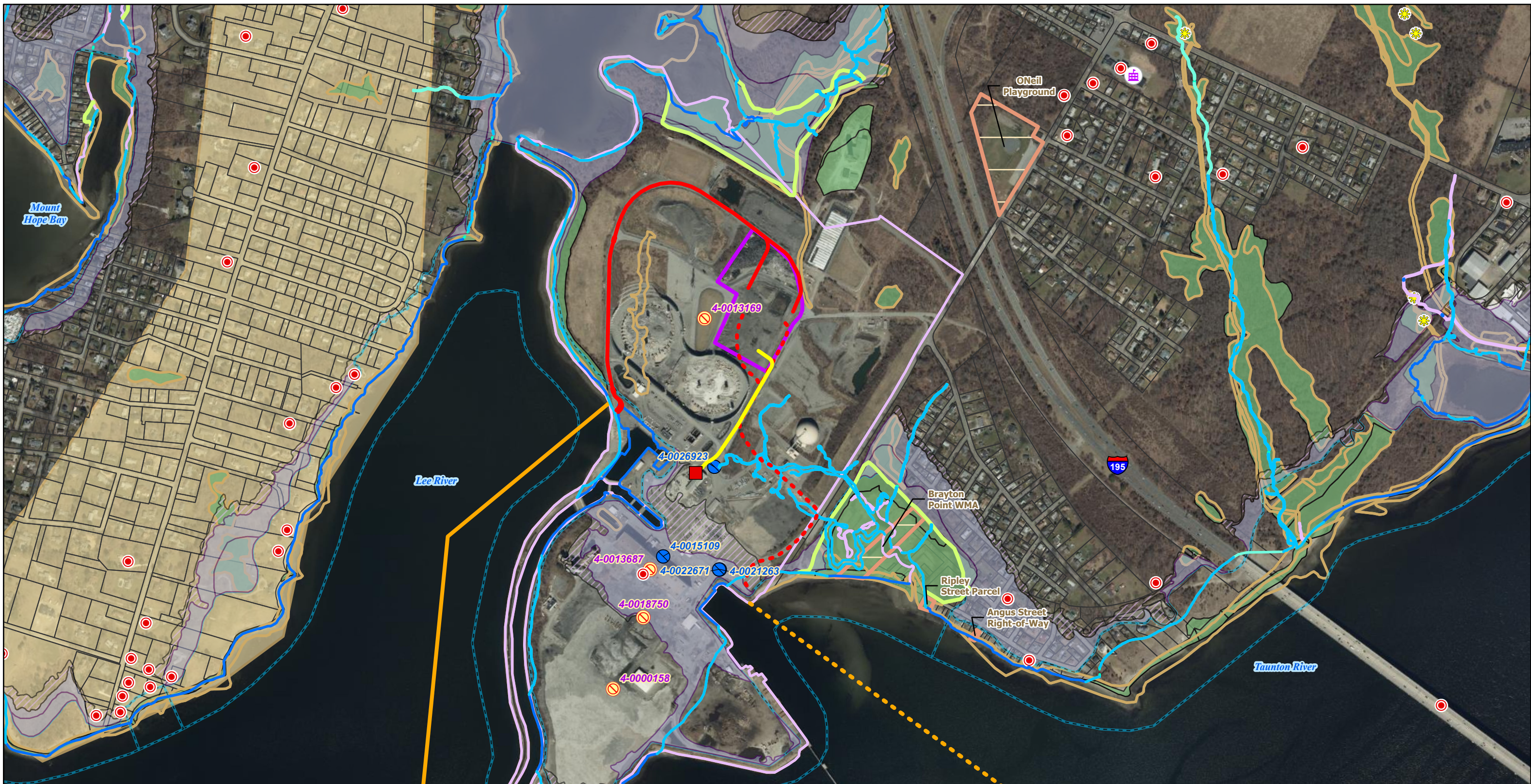


- Brayton Point POI
- Preferred Route (Lee River Approach)
- Onshore 345kV Transmission Route
- Onshore Export Cable Route (Preferred)
- - - Onshore Export Cable Route (Noticed Alternative)
- - - Noticed Alternative (Taunton River Approach)
- HVDC Converter Station Site
- HVDC Converter Station Access Road

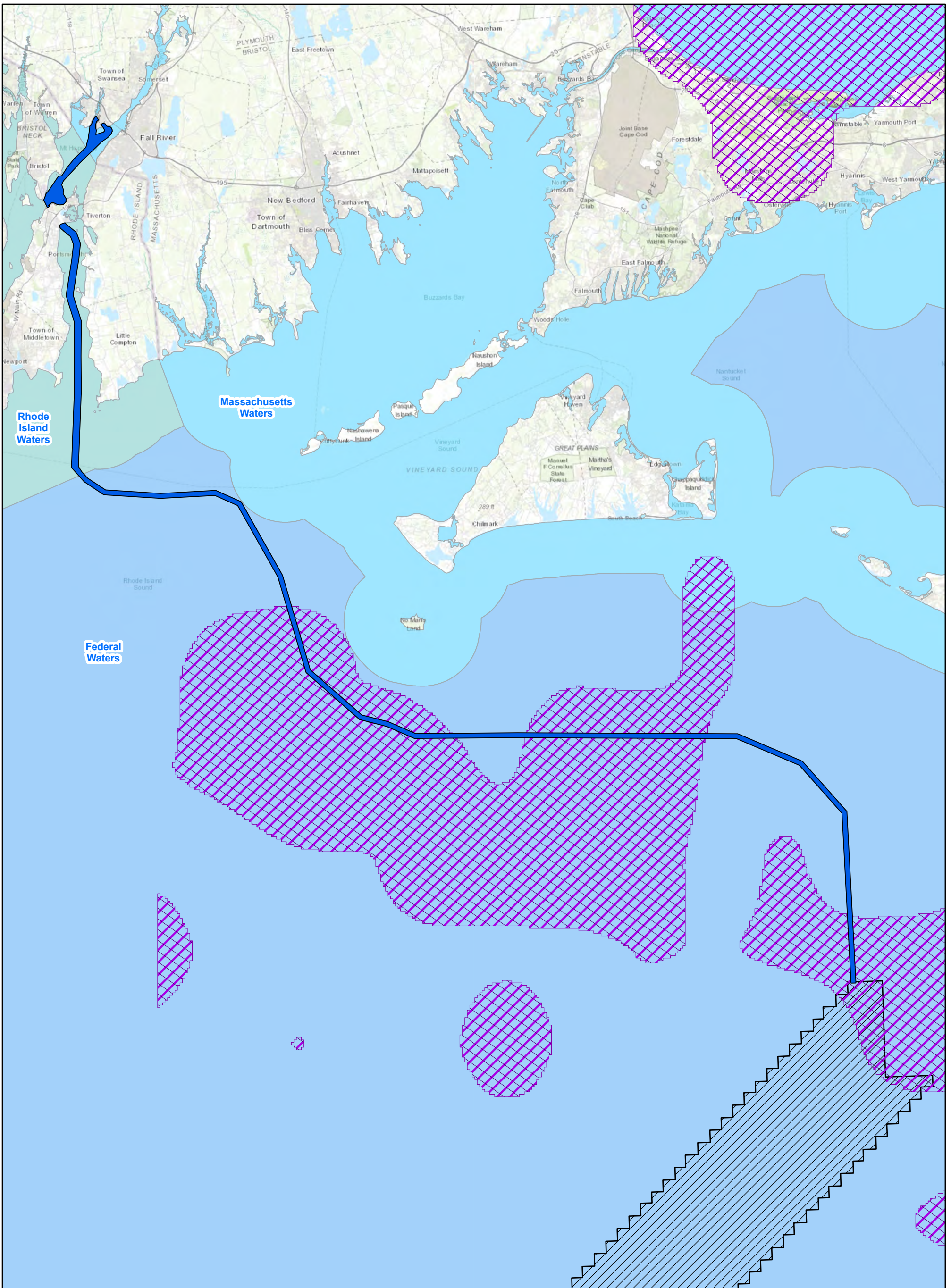


MAYFLOWER WIND
OFFSHORE WIND PROJECT
SOMERSET, MA
FIGURE 1-6
HVDC CONVERTER STATION SITE
BRAYTON POINT






<ul style="list-style-type: none"> Brayton Point POI Onshore 345kV Transmission Route Onshore Export Cable Route (Preferred) Onshore Export Cable Route (Noticed Alternative) 	<ul style="list-style-type: none"> Preferred Route (Lee River Approach) Noticed Alternative (Taunton River Approach) HVDC Converter Station Site Potential Vernal Pool (NHESP 2013) 	<ul style="list-style-type: none"> MassDEP Closed Sites with Activity and Use Limitations and Requirements (A3 RAOs) (2021) MassDEP Closed Site (2021) School 	<ul style="list-style-type: none"> MA Historical Commission (MHC) Inventory (2022) Accessed on 05/12/2022 Jurisdiction (Tidelands Jurisdiction - Ch 91) (MassDEP 2011) Jurisdiction (Tidelands Jurisdiction - Ch 91) (MassDEP 2011) 	<ul style="list-style-type: none"> Historic High Water (Tidelands Jurisdiction - Ch 91) Contemporary High Water (Tidelands Jurisdiction - Ch 91) Inferred Contemporary High Water (Tidelands Jurisdiction - Ch 91) Inferred Historic High Water (Tidelands Jurisdiction - Ch 91) 	<ul style="list-style-type: none"> Landlocked Tidelands (Tidelands Jurisdiction - Ch 91) Marsh Boundary - Landward (Tidelands Jurisdiction - Ch 91) 	<ul style="list-style-type: none"> Marsh Boundary - Seaward (Tidelands Jurisdiction - Ch 91) NWI Wetland (USFWS 2008) MassDEP Wetland (2005) 	<ul style="list-style-type: none"> MA FEMA Flood Zone Designation (2017) AE: 1% Annual Chance of Flooding, with Base Flood Elevation VE: High Risk Coastal Area X: 0.2% Annual Chance of Flooding 	<ul style="list-style-type: none"> MHC Historic Inventory Area (2022) Accessed on 05/12/2022 Protected Land (MassGIS 2022) Brayton Point Parcel Parcel (Massachusetts) 		<p>MAYFLOWER WIND OFFSHORE WIND PROJECT SOMERSET, MA</p> <p>FIGURE 1-7 ENVIRONMENTAL CONSTRAINTS PREFERRED AND NOTICED ALTERNATIVE</p> <p>0 500 1,000 Feet</p> <p></p> <p> POWER ENGINEERS Date: 5/25/2022</p>
---	---	--	--	--	---	---	---	--	--	---




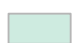
 Brayton Point Offshore Export Cable Corridor

 North Atlantic Right Whale Core Habitat (MA CZM, 2022)
Accessed on 03/25/22

 Mayflower Wind Lease Area OCS A-0521

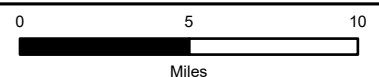
 Federal Waters

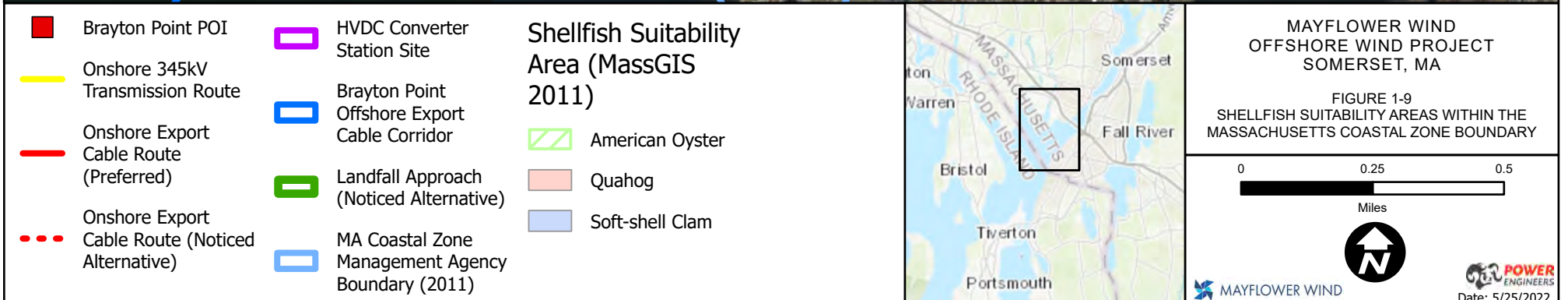
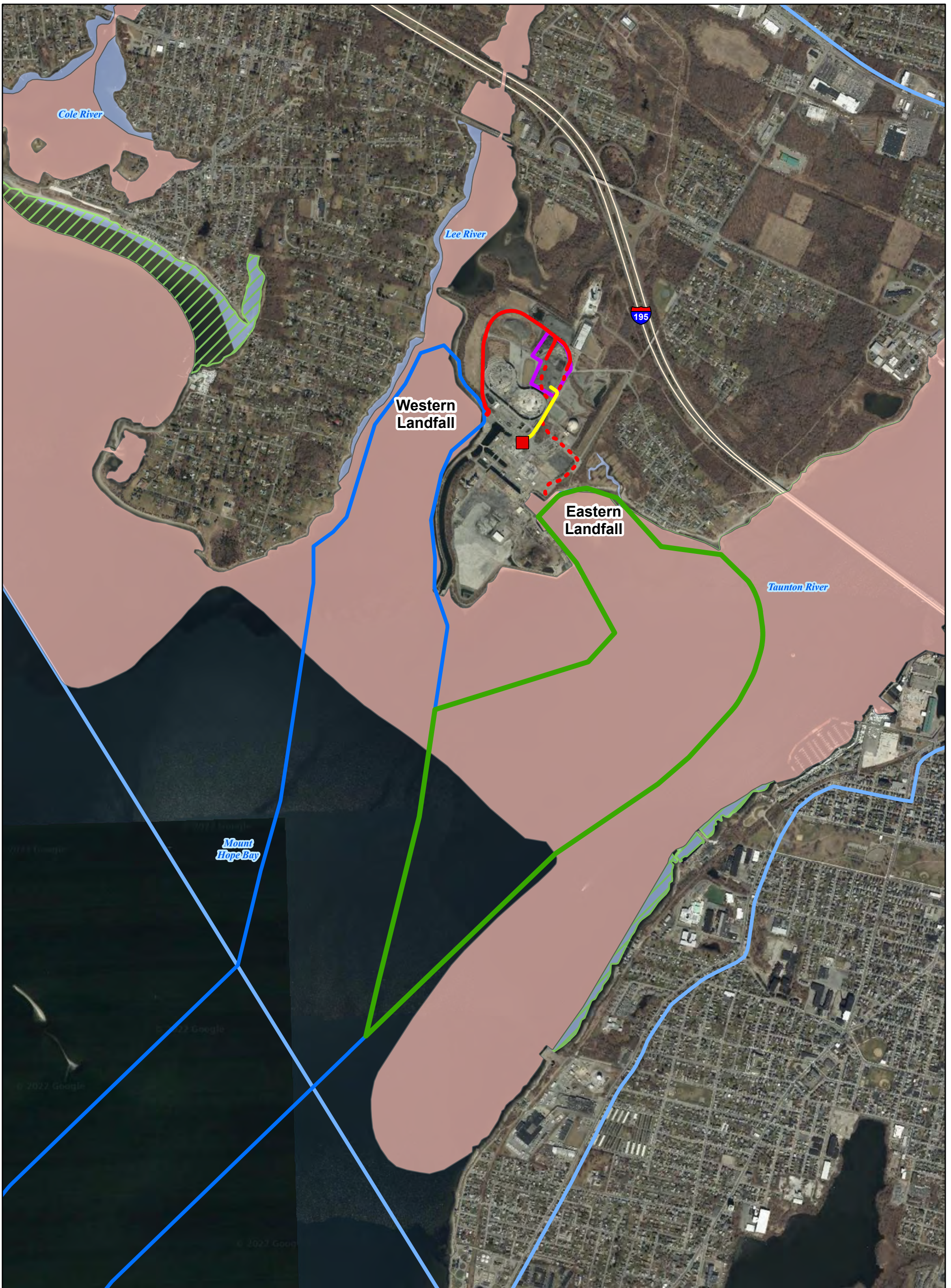
 Massachusetts Waters

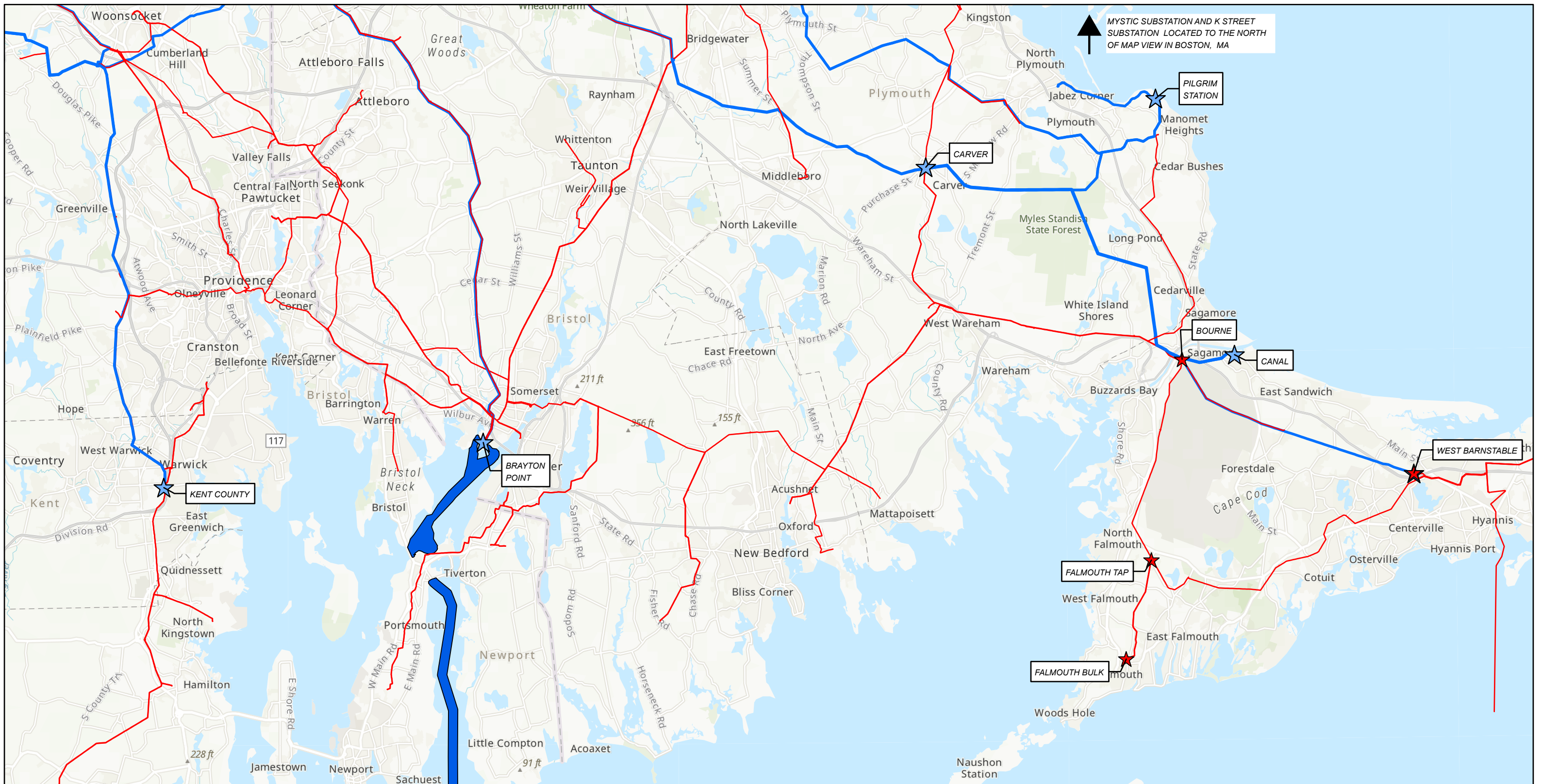
 Rhode Island Waters



MAYFLOWER WIND OFFSHORE WIND PROJECT SOMERSET, MA AND PORTSMOUTH, RI
FIGURE 1-8
MA OMP SPECIAL, SENSITIVE, AND UNIQUE RESOURCES

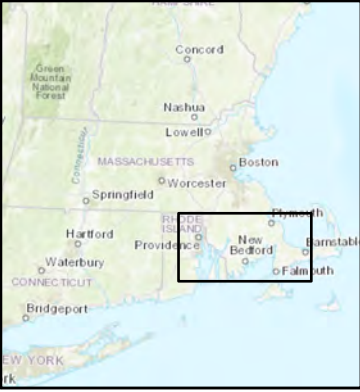




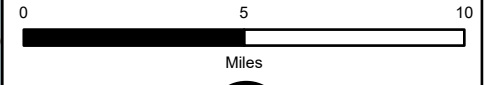


↑ MYSTIC SUBSTATION AND K STREET SUBSTATION LOCATED TO THE NORTH OF MAP VIEW IN BOSTON, MA

- ★ 345 kV Substation
- ★ 115 kV Substation
- 345 kV Transmission Line
- 115 kV Transmission Line
- Brayton Point Offshore Export Cable Corridor



MAYFLOWER WIND OFFSHORE WIND PROJECT SOMERSET, MA AND PORTSMOUTH, RI
 FIGURE 3-1 ROUTING UNIVERSE OF POTENTIAL POINTS OF INTERCONNECTION





<ul style="list-style-type: none"> ■ Brayton Point POI — Onshore 345kV Transmission Route — Onshore Export Cable Route (Preferred) - - - Onshore Export Cable Route (Noticed Alternative) 	<ul style="list-style-type: none"> HVDC Converter Station Site 	<ul style="list-style-type: none"> Massachusetts Waters Rhode Island Waters 		<p style="text-align: center;">MAYFLOWER WIND OFFSHORE WIND PROJECT SOMERSET, MA</p> <p style="text-align: center;">FIGURE 3-2 PROJECT OVERVIEW</p> <div style="text-align: center;"> <p>0 0.25 0.5</p> <p>Miles</p> </div> <p style="text-align: right;"> </p> <p style="text-align: right; font-size: small;">Date: 5/25/2022</p>
--	---	---	--	--