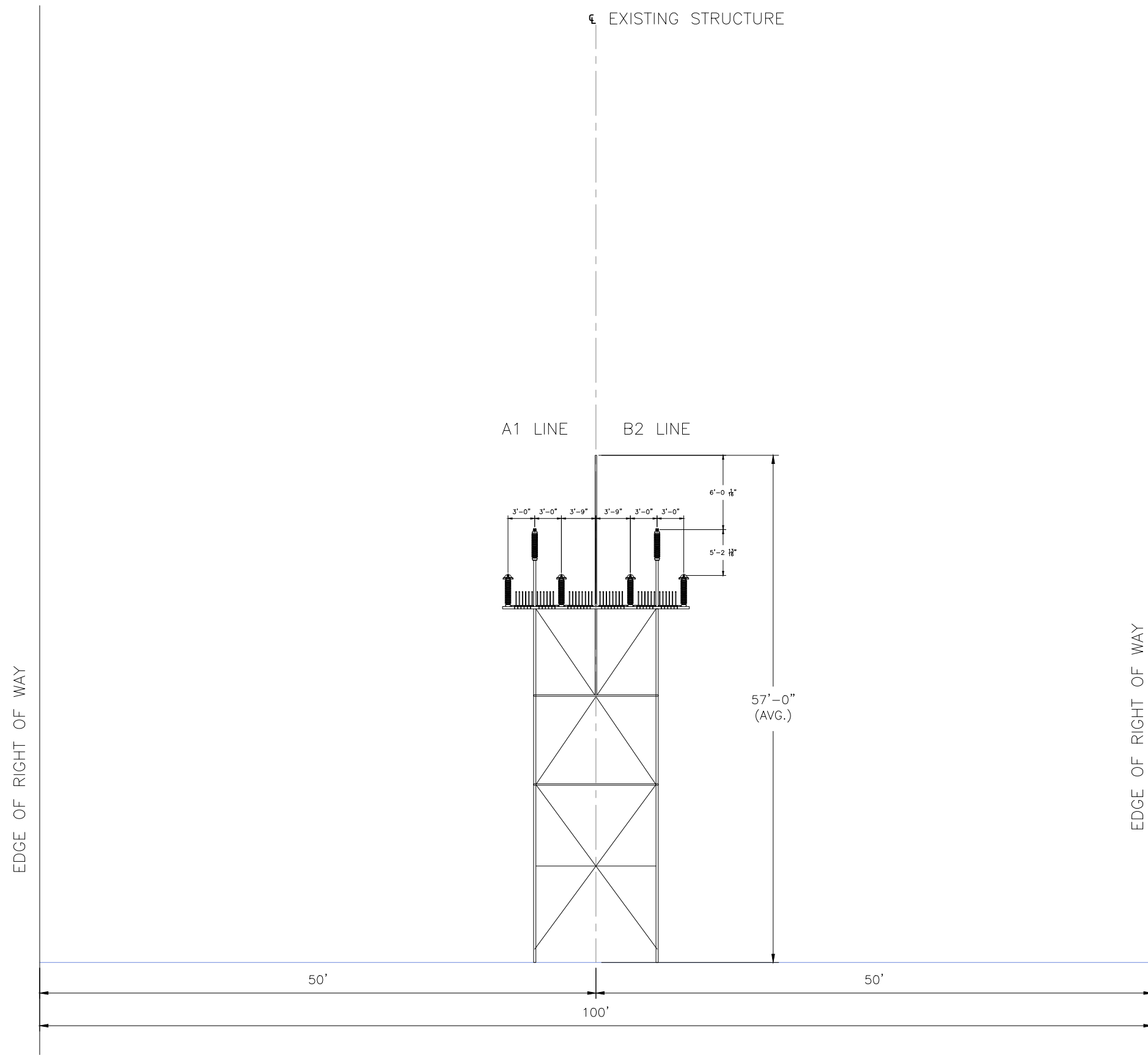


CONFIDENTIALITY STATEMENT: THIS DOCUMENT CONTAINS CONFIDENTIAL AND PROPRIETARY INFORMATION OF NATIONAL GRID. IT IS TO BE USED BY AUTHORIZED CONTRACTORS FOR NATIONAL GRID SOLELY IN CONNECTION WITH THE  
 400739-P-X-01-E



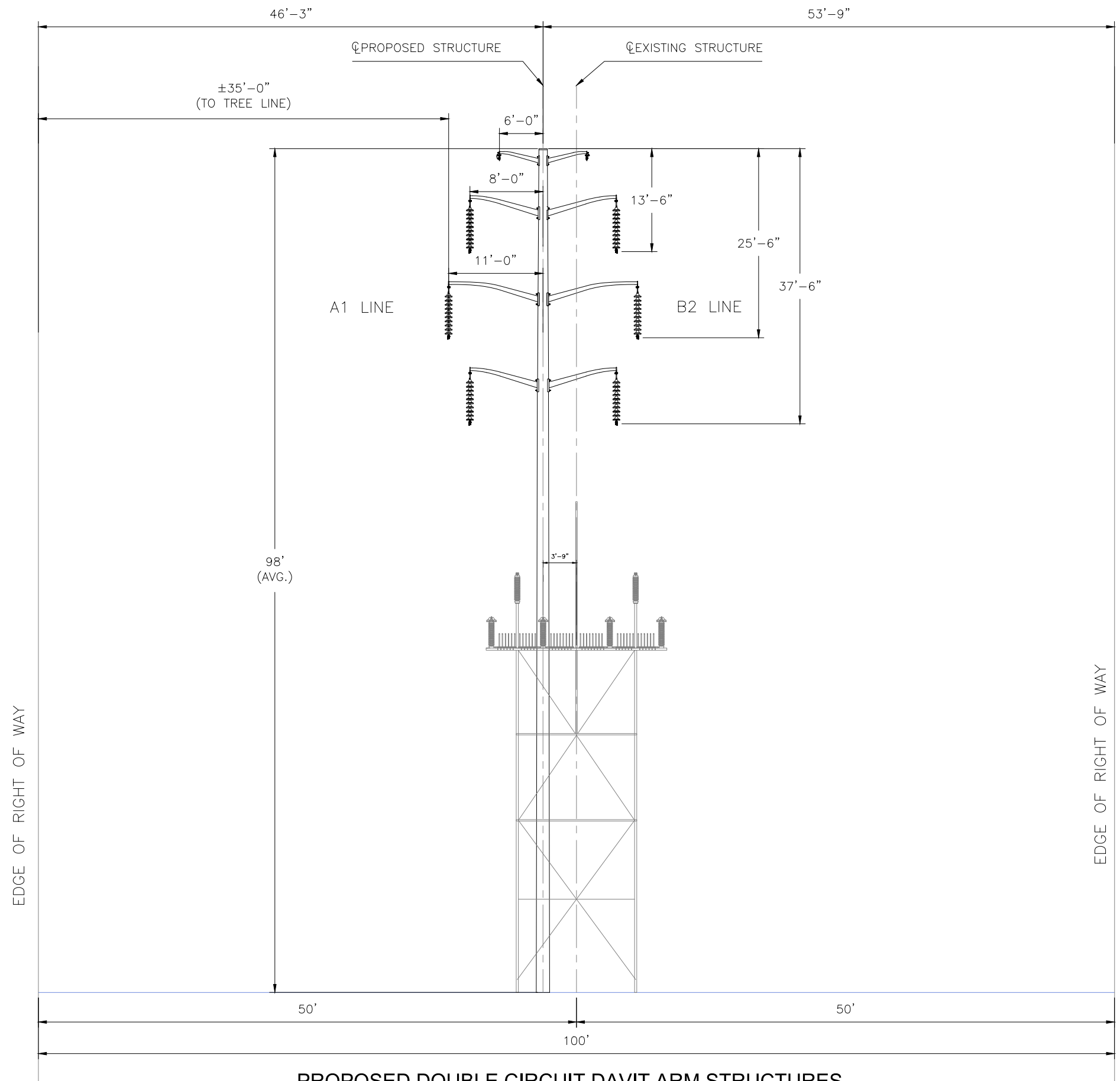
EXISTING DOUBLE CIRCUIT LATTICE TOWER STRUCTURES  
 LOOKING TOWARDS PRATTS JUNCTION  
 MA/NH STATE LINE TO STRUCTURE 561  
 COMMONWEALTH OF MASSACHUSETTS

INCHES ON ORIGINAL

CROSS-SECTION		PREPARED BY	JTF	4/23	ISSUED FOR PERMITTING	VERSION DESCRIPTION	VERSION
ROW (A1/B2 MAIN LINE - VERNON TO PRATTS JUNCTION)		REVIEWED BY	TBD	-	JTF	TBD	1
PROJECT (A1/B2 REBUILD PROJECT)		APPROVED BY	JTF	4/23			
FACING PRATTS JUNCTION - EXISTING		SCALE	AS NOTED				
PROPOSED DOUBLE CIRCUIT STRUCTURES		SHEET	11	OF	22		
		INDEX					

CONFIDENTIALITY STATEMENT: THIS DOCUMENT CONTAINS CONFIDENTIAL AND PROPRIETARY INFORMATION OF NATIONAL GRID. IT IS TO BE USED BY AUTHORIZED CONTRACTORS FOR NATIONAL GRID SOLELY IN CONNECTION WITH THE SPECIFIC PROJECT FOR WHICH IT HAS BEEN TRANSMITTED. ANY OTHER USE, ITS REPRODUCTION WITHOUT PRIOR EXPRESS WRITTEN AUTHORIZATION OF NATIONAL GRID IS STRICTLY PROHIBITED.

400739-P-X-01-P



PROPOSED DOUBLE CIRCUIT DAVIT ARM STRUCTURES  
 LOOKING TOWARDS PRATTS JUNCTION  
 MA/NH STATE LINE TO STRUCTURE 561  
 COMMONWEALTH OF MASSACHUSETTS

INCHES ON ORIGINAL

<b>CROSS-SECTION</b>		4/23
PREPARED BY	JTF	4/23
REVIEWED BY	TBD	-
APPROVED BY	JTF	4/23
SCALE	AS NOTED	
SHEET	11	OF 22
INDEX	-	400739

ISSUED FOR PERMITTING	VERSION DESCRIPTION
JTF TBD JTF	1

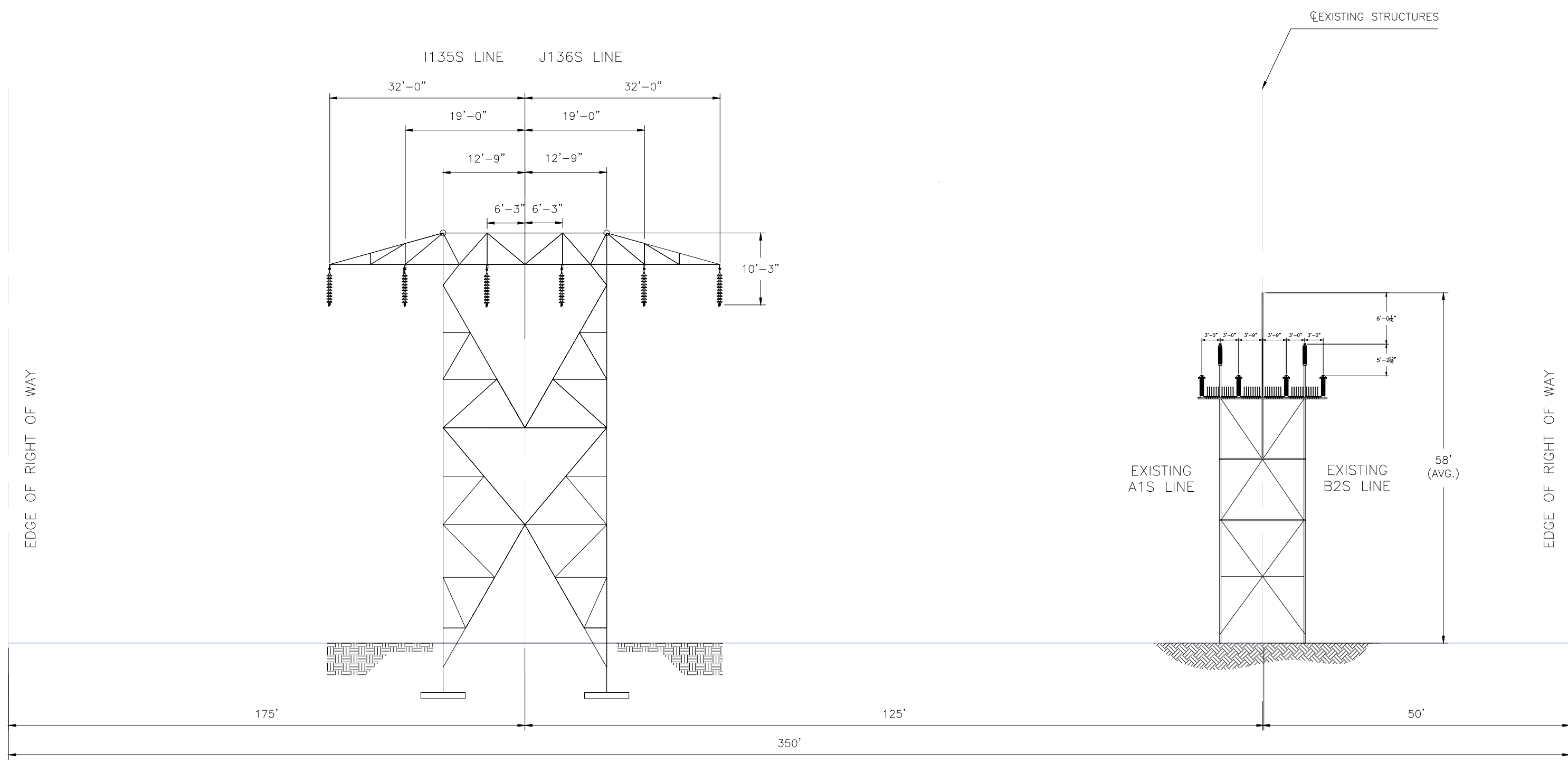
PREPARED BY	VERSION
JTF TBD JTF	1

nationalgrid

CONFIDENTIALITY STATEMENT: THIS DOCUMENT CONTAINS CONFIDENTIAL AND PROPRIETARY INFORMATION OF NATIONAL GRID. IT IS TO BE USED BY AUTHORIZED CONTRACTORS FOR NATIONAL GRID SOLELY IN CONNECTION WITH THE SPECIFIC PROJECT FOR WHICH IT HAS BEEN TRANSMITTED. ANY OTHER USE, ITS TRANSMITTAL TO THIRD PARTIES, OR ITS REPRODUCTION WITHOUT PRIOR EXPRESS WRITTEN AUTHORIZATION OF NATIONAL GRID IS STRICTLY PROHIBITED.

400739-P-X-02-E



A1/B2 EXISTING DOUBLE CIRCUIT LATTICE TOWER STRUCTURES  
 CROSS-SECTION FACING PRATTS JUNCTION SUBSTATION  
 EXISTING STRUCTURE 561 TO EXISTING STRUCTURE 642  
 COMMONWEALTH OF MASSACHUSETTS

INCHES ON ORIGINAL

CROSS-SECTION		PREPARED BY	JTF	4/23
ROW (A1/B2 MAIN LINE - VERNON TO PRATTS JUNCTION)		REVIEWED BY	TBD	4/23
PROJECT (A1/B2 REBUILD PROJECT)		APPROVED BY	JTF	4/23
FACING PRATTS JUNCTION - EXISTING		SCALE	AS NOTED	
PROPOSED DOUBLE CIRCUIT STRUCTURES		SHEET	16	OF 22
		INDEX	400739	
ISSUED FOR PERMITTING	DATE	4/23/23	VER	1
ISSUED FOR PERMITTING	DATE		VER	2
ISSUED FOR PERMITTING	DATE		VER	3
ISSUED FOR PERMITTING	DATE		VER	4
ISSUED FOR PERMITTING	DATE		VER	5
ISSUED FOR PERMITTING	DATE		VER	6
ISSUED FOR PERMITTING	DATE		VER	7
PREPARED BY	JTF		VERSION	1
REVIEWED BY	TBD			
APPROVED BY	JTF			
SCALE	AS NOTED			
SHEET	16			
INDEX	400739			

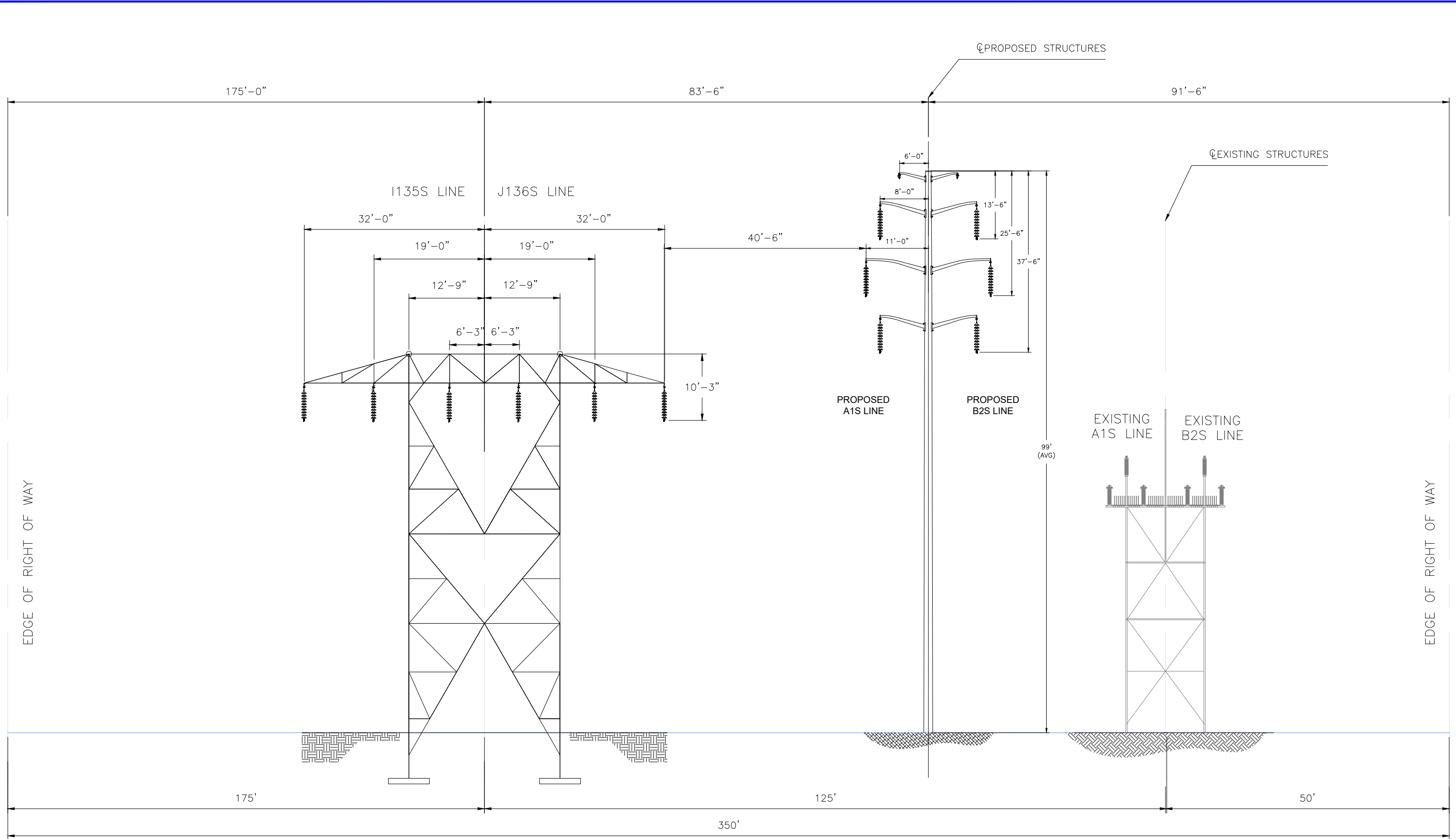
PRINTED COPIES ARE NOT DOCUMENT CONTROLLED. FOR THE LATEST AUTHORIZED VERSION PLEASE REFER TO THE ENGINEERING DEPARTMENT DOCUMENTS CABINET IN DOCUMENTUM

400739-P-X-02-E

4/23/2023 1:33 PM

CONFIDENTIALITY STATEMENT: THIS DOCUMENT CONTAINS CONFIDENTIAL AND PROPRIETARY INFORMATION OF NATIONAL GRID. IT IS TO BE USED BY AUTHORIZED CONTRACTORS FOR NATIONAL GRID SOLELY IN CONNECTION WITH THE SPECIFIC PROJECT FOR WHICH IT HAS BEEN TRANSMITTED. ANY OTHER USE, ITS TRANSMITTAL TO THIRD PARTIES, OR ITS REPRODUCTION WITHOUT PRIOR EXPRESS WRITTEN AUTHORIZATION OF NATIONAL GRID IS STRICTLY PROHIBITED.

400739-P-X-02-P



A1/B2 PROPOSED DOUBLE CIRCUIT DAVIT ARM STRUCTURES  
 CROSS-SECTION FACING PRATTS JUNCTION SUBSTATION  
 EXISTING STRUCTURE 561 TO EXISTING STRUCTURE 642  
 COMMONWEALTH OF MASSACHUSETTS

INCHES ON ORIGINAL

CROSS-SECTION		PREPARED BY	JTF	DATE	4/23
ROW (A1/B2 MAIN LINE - VERNON TO PRATTS JUNCTION)		REVIEWED BY	TBD	DATE	4/23
PROJECT (A1/B2 REBUILD PROJECT)		APPROVED BY	JTF	DATE	4/23
FACING PRATTS JUNCTION - PROPOSED		SCALE	AS NOTED	SHEET	16 OF 22
PROPOSED DOUBLE CIRCUIT STRUCTURES		INDEX	400739		

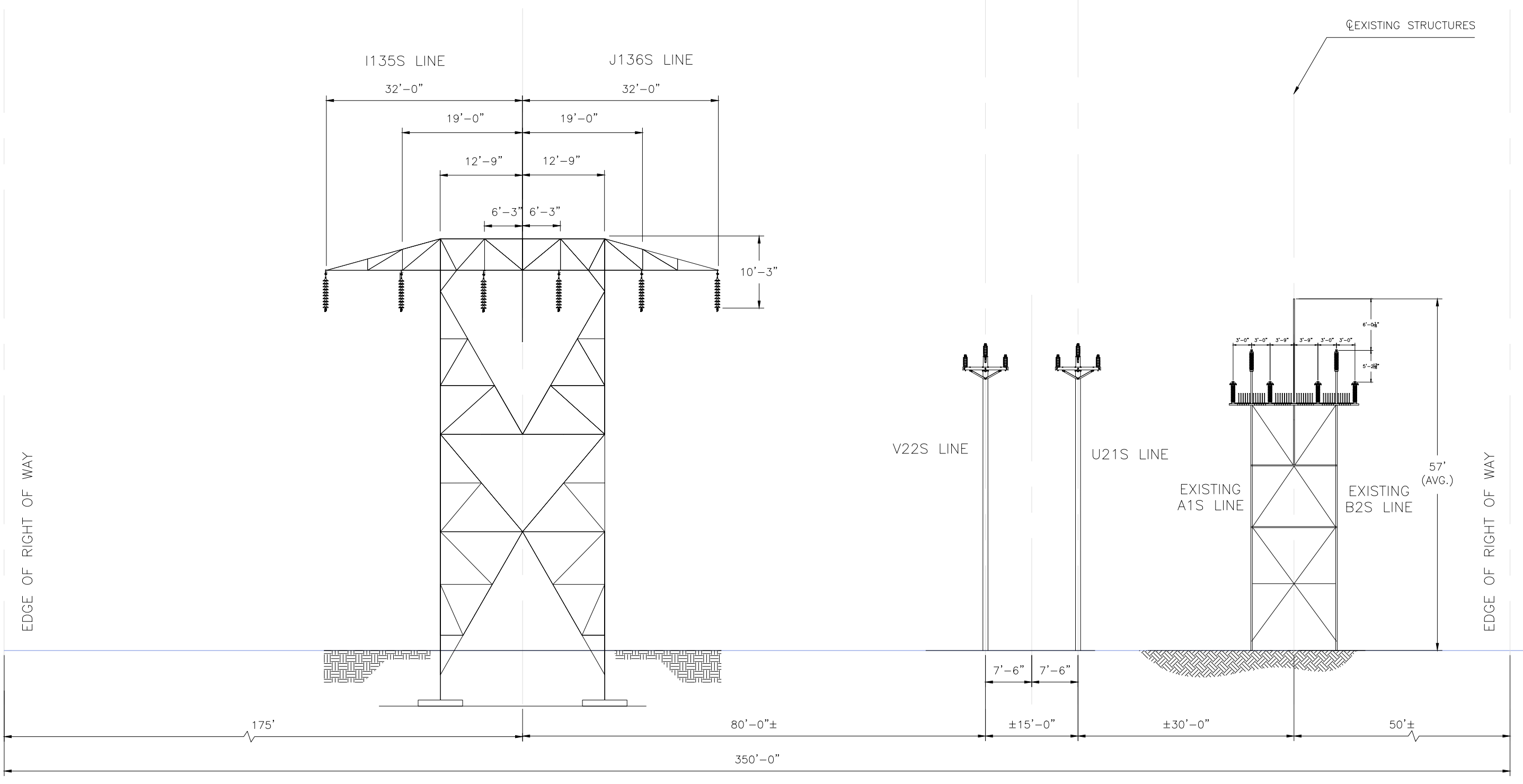
VERSION	1
PREPARED BY	JTF
REVIEWED BY	TBD
APPROVED BY	JTF
DATE	4/23/2023
ISSUED FOR PERMITTING	
ISSUED FOR CONSTRUCTION	
ISSUED FOR OPERATION	
ISSUED FOR ARCHIVE	

nationalgrid

PRINTED COPIES ARE NOT DOCUMENT CONTROLLED. FOR THE LATEST AUTHORIZED VERSION PLEASE REFER TO THE ENGINEERING DEPARTMENT DOCUMENTS CABINET IN DOCUMENTUM  
 PRINTED 4/23/2023 1:47 PM

CONFIDENTIALITY STATEMENT: THIS DOCUMENT CONTAINS CONFIDENTIAL AND PROPRIETARY INFORMATION OF NATIONAL GRID. IT IS TO BE USED BY AUTHORIZED CONTRACTORS FOR NATIONAL GRID SOLELY IN CONNECTION WITH THE SPECIFIC PROJECT FOR WHICH IT HAS BEEN TRANSMITTED. ANY OTHER USE, ITS REPRODUCTION WITHOUT PRIOR EXPRESS WRITTEN AUTHORIZATION OF NATIONAL GRID IS STRICTLY PROHIBITED.



A1/B2 EXISTING DOUBLE CIRCUIT LATTICE TOWER STRUCTURES  
 CROSS-SECTION FACING PRATTS JUNCTION SUBSTATION  
 EXISTING STRUCTURE 642 TO EXISTING STRUCTURE 647  
 COMMONWEALTH OF MASSACHUSETTS

INCHES ON ORIGINAL

PREPARED BY		JTF	4/23
REVIEWED BY		TBD	4/23
APPROVED BY		JTF	4/23
SCALE		AS NOTED	
SHEET		19	OF 22
INDEX			400739

**CROSS-SECTION**  
 ROW (A1/B2 MAIN LINE - VERNON TO PRATTS JUNCTION)  
 PROJECT (A1/B2 REBUILD PROJECT)  
 FACING PRATTS JUNCTION - EXISTING  
 PROPOSED DOUBLE CIRCUIT STRUCTURES

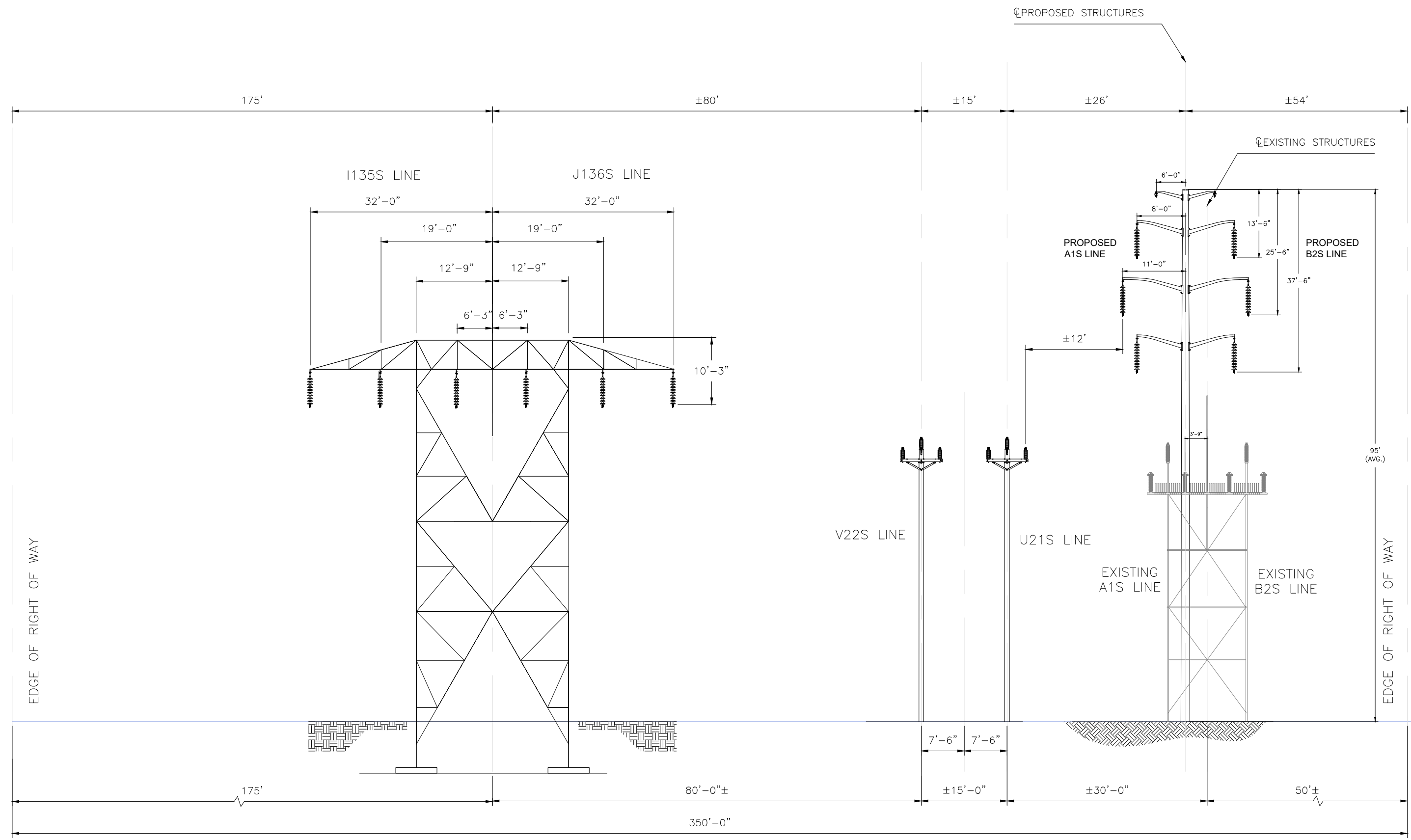
VER	DATE	ISSUED FOR PERMITTING	VERSION DESCRIPTION	PREPARED BY	APPROVED BY	VERSION
1	4/23/23			JTF	TBD	1
2				JTF	TBD	2
3				JTF	TBD	3
4				JTF	TBD	4
5				JTF	TBD	5
6				JTF	TBD	6
7				JTF	TBD	7

nationalgrid

1

CONFIDENTIALITY STATEMENT: THIS DOCUMENT CONTAINS CONFIDENTIAL AND PROPRIETARY INFORMATION OF NATIONAL GRID. IT IS TO BE USED BY AUTHORIZED CONTRACTORS FOR NATIONAL GRID SOLELY IN CONNECTION WITH THE SPECIFIC PROJECT FOR WHICH IT HAS BEEN TRANSMITTED. ANY OTHER USE, ITS REPRODUCTION WITHOUT PRIOR EXPRESS WRITTEN AUTHORIZATION OF NATIONAL GRID IS STRICTLY PROHIBITED.

400739-P-X-03-P



A1/B2 PROPOSED DOUBLE CIRCUIT DAVIT ARM STRUCTURES  
 CROSS-SECTION FACING PRATTS JUNCTION SUBSTATION  
 EXISTING STRUCTURE 642 TO EXISTING STRUCTURE 647  
 COMMONWEALTH OF MASSACHUSETTS

INCHES ON ORIGINAL

PREPARED BY		JTF	4/23
REVIEWED BY		TBD	4/23
APPROVED BY		JTF	4/23
SCALE		AS NOTED	
SHEET		19	OF 22
INDEX			400739

ISSUED FOR PERMITTING		DATE	VERSION DESCRIPTION
1		4/23/23	
2			
3			
4			
5			
6			
7			

PREPARED BY	JTF	4/23
REVIEWED BY	TBD	4/23
APPROVED BY	JTF	4/23
SCALE	AS NOTED	
SHEET	19	OF 22
INDEX		400739

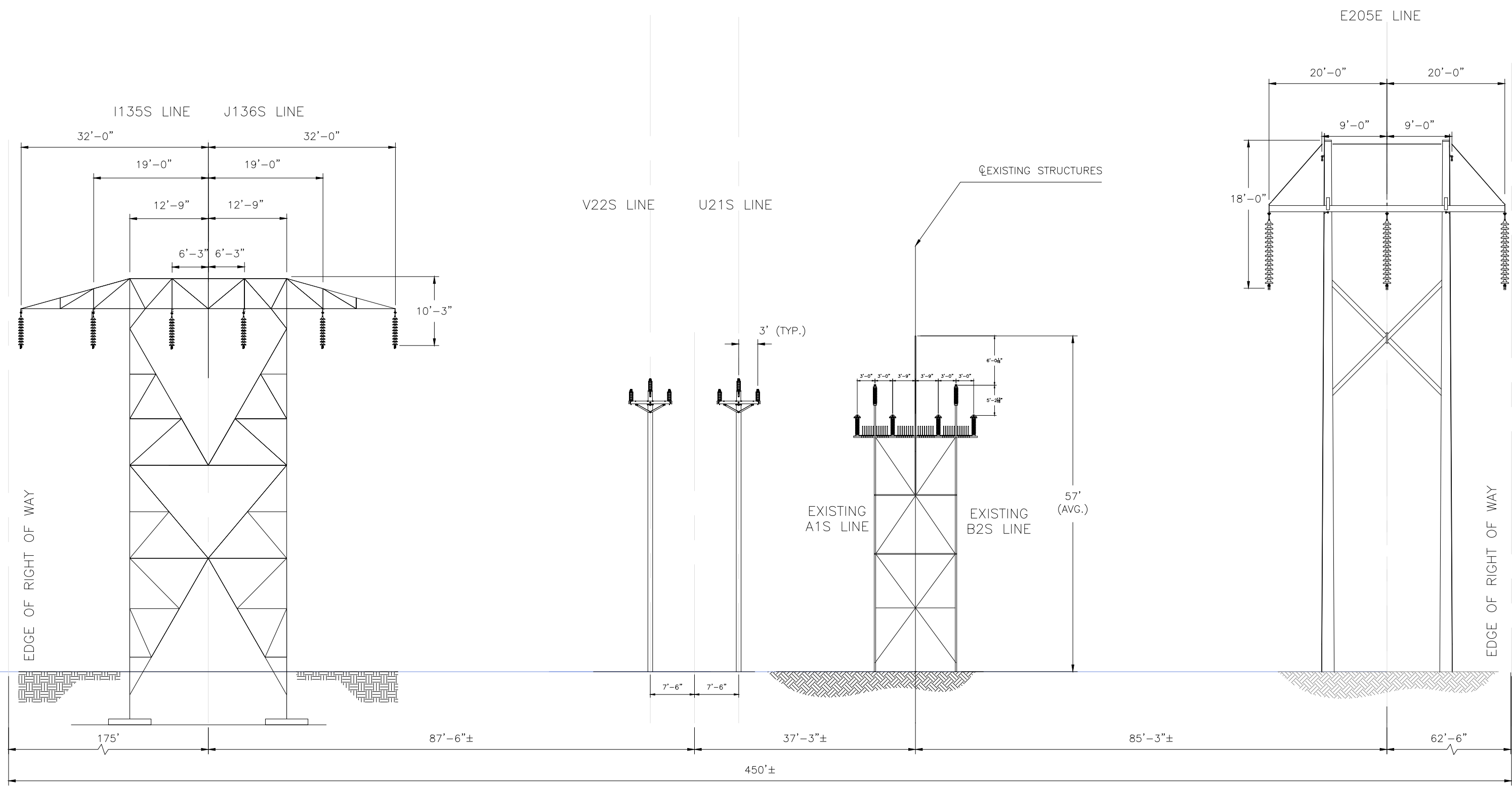
CROSS-SECTION	
ROW (A1/B2 MAIN LINE - VERNON TO PRATTS JUNCTION)	
PROJECT (A1/B2 REBUILD PROJECT)	
FACING PRATTS JUNCTION - PROPOSED	
PROPOSED DOUBLE CIRCUIT STRUCTURES	

VERSION	1
PREPARED BY	JTF
DATE	4/23/23
ISSUED FOR PERMITTING	

CONFIDENTIALITY STATEMENT: THIS DOCUMENT CONTAINS CONFIDENTIAL AND PROPRIETARY INFORMATION OF NATIONAL GRID. IT IS TO BE USED BY AUTHORIZED CONTRACTORS FOR NATIONAL GRID SOLELY IN CONNECTION WITH THE SPECIFIC PROJECT FOR WHICH IT HAS BEEN TRANSMITTED. ANY OTHER USE, ITS REPRODUCTION WITHOUT PRIOR EXPRESS WRITTEN AUTHORIZATION OF NATIONAL GRID IS STRICTLY PROHIBITED.

400739-P-X-04-E



A1/B2 EXISTING DOUBLE CIRCUIT LATTICE TOWER STRUCTURES  
 CROSS-SECTION FACING PRATTS JUNCTION SUBSTATION  
 EXISTING STRUCTURE 648 TO EXISTING STRUCTURE 653  
 COMMONWEALTH OF MASSACHUSETTS

INCHES ON ORIGINAL

PREPARED BY		JTF	4/23
REVIEWED BY		TBD	4/23
APPROVED BY		JTF	4/23
SCALE		AS NOTED	
SHEET		20	OF 22
INDEX			400739

**CROSS-SECTION**  
 ROW (A1/B2 MAIN LINE - VERNON TO PRATTS JUNCTION)  
 PROJECT (A1/B2 REBUILD PROJECT)  
 FACING TOWARD PRATTS JUNCTION - EXISTING  
 PROPOSED DOUBLE CIRCUIT STRUCTURES

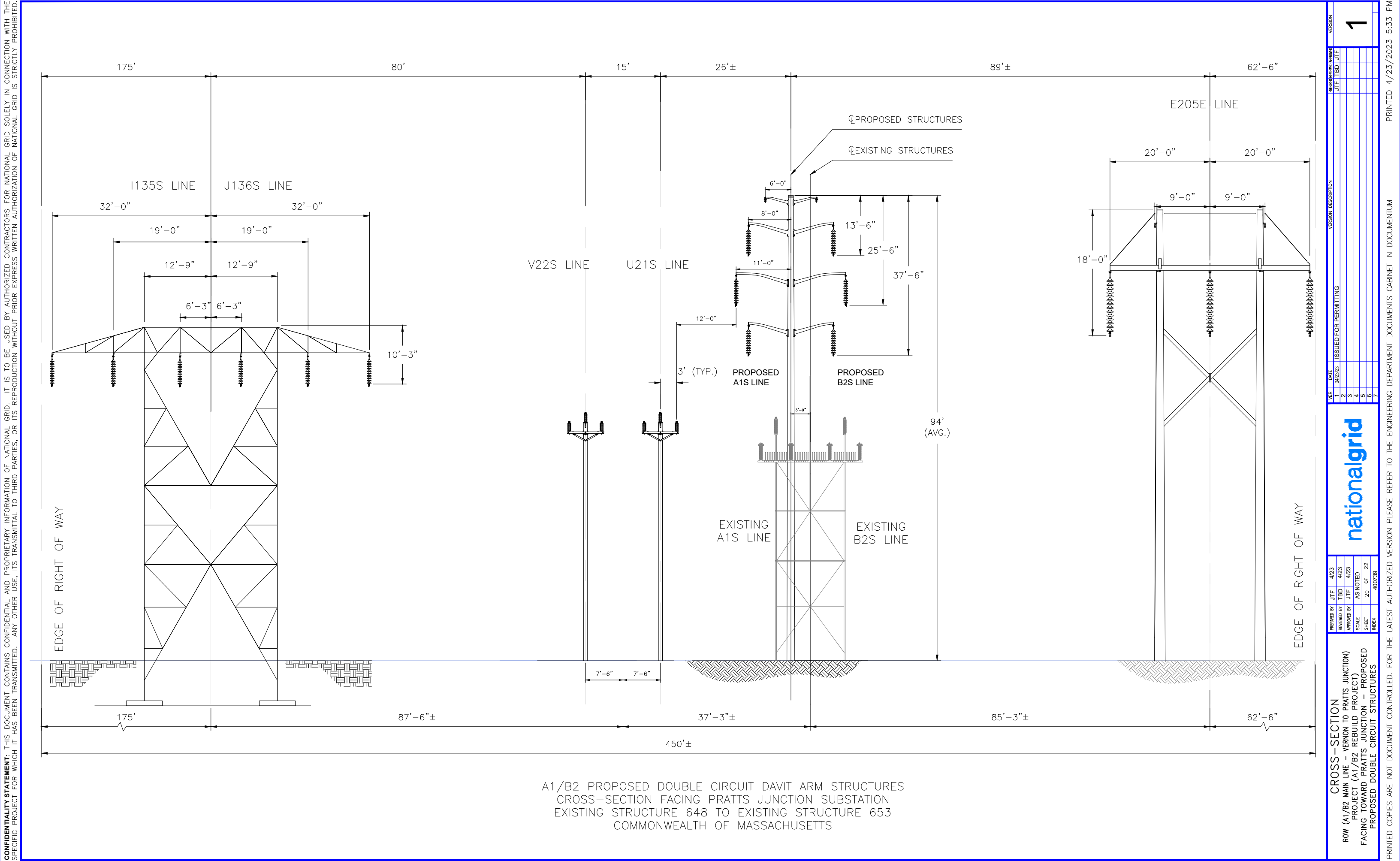
**nationalgrid**

VER	DATE	ISSUED FOR PERMITTING	VERSION DESCRIPTION	PREPARED BY	REVIEWED BY	APPROVED BY
1	05/23/23			JTF	TBD	JTF
2						
3						
4						
5						
6						
7						

1

PRINTED COPIES ARE NOT DOCUMENT CONTROLLED. FOR THE LATEST AUTHORIZED VERSION PLEASE REFER TO THE ENGINEERING DEPARTMENT DOCUMENTS CABINET IN DOCUMENTUM  
 PRINTED 4/23/2023 5:08 PM

400739-P-X-04-E



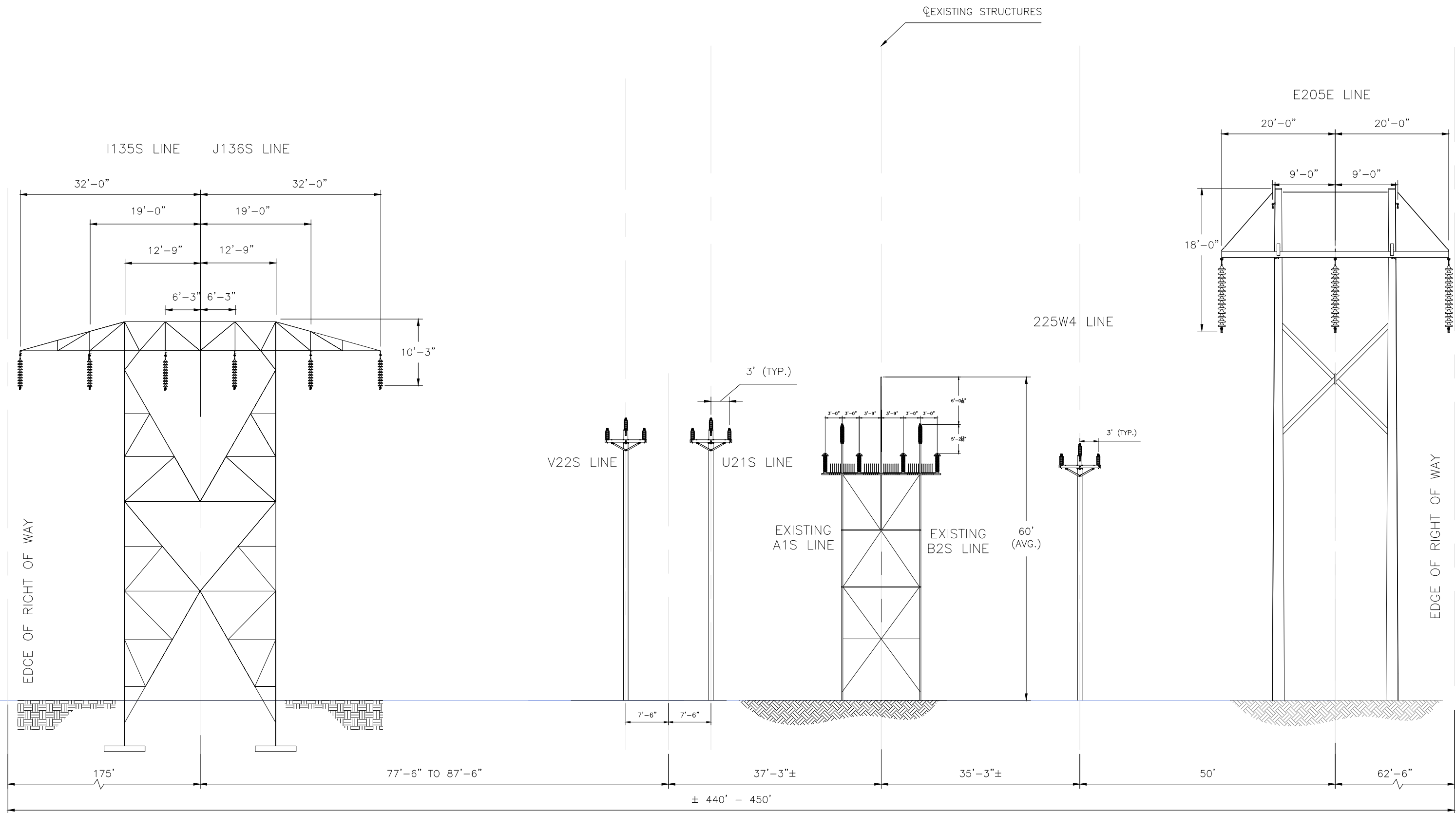
A1/B2 PROPOSED DOUBLE CIRCUIT DAVIT ARM STRUCTURES  
 CROSS-SECTION FACING PRATTS JUNCTION SUBSTATION  
 EXISTING STRUCTURE 648 TO EXISTING STRUCTURE 653  
 COMMONWEALTH OF MASSACHUSETTS

INCHES ON ORIGINAL



CONFIDENTIALITY STATEMENT: THIS DOCUMENT CONTAINS CONFIDENTIAL AND PROPRIETARY INFORMATION OF NATIONAL GRID. IT IS TO BE USED BY AUTHORIZED CONTRACTORS FOR NATIONAL GRID SOLELY IN CONNECTION WITH THE SPECIFIC PROJECT FOR WHICH IT HAS BEEN TRANSMITTED. ANY OTHER USE, ITS REPRODUCTION WITHOUT PRIOR EXPRESS WRITTEN AUTHORIZATION OF NATIONAL GRID IS STRICTLY PROHIBITED.

400739-P-X-05-E



EXISTING A1/B2 DOUBLE CIRCUIT LATTICE TOWER STRUCTURES  
 CROSS-SECTION FACING PRATTS JUNCTION SUBSTATION  
 EXISTING STRUCTURE 654 TO PRATTS JUNCTION SUBSTATION  
 COMMONWEALTH OF MASSACHUSETTS

INCHES ON ORIGINAL

PREPARED BY		JTF	4/23
REVIEWED BY		TBD	4/23
APPROVED BY		JTF	4/23
SCALE		AS NOTED	
SHEET		21	OF 22
INDEX			400739

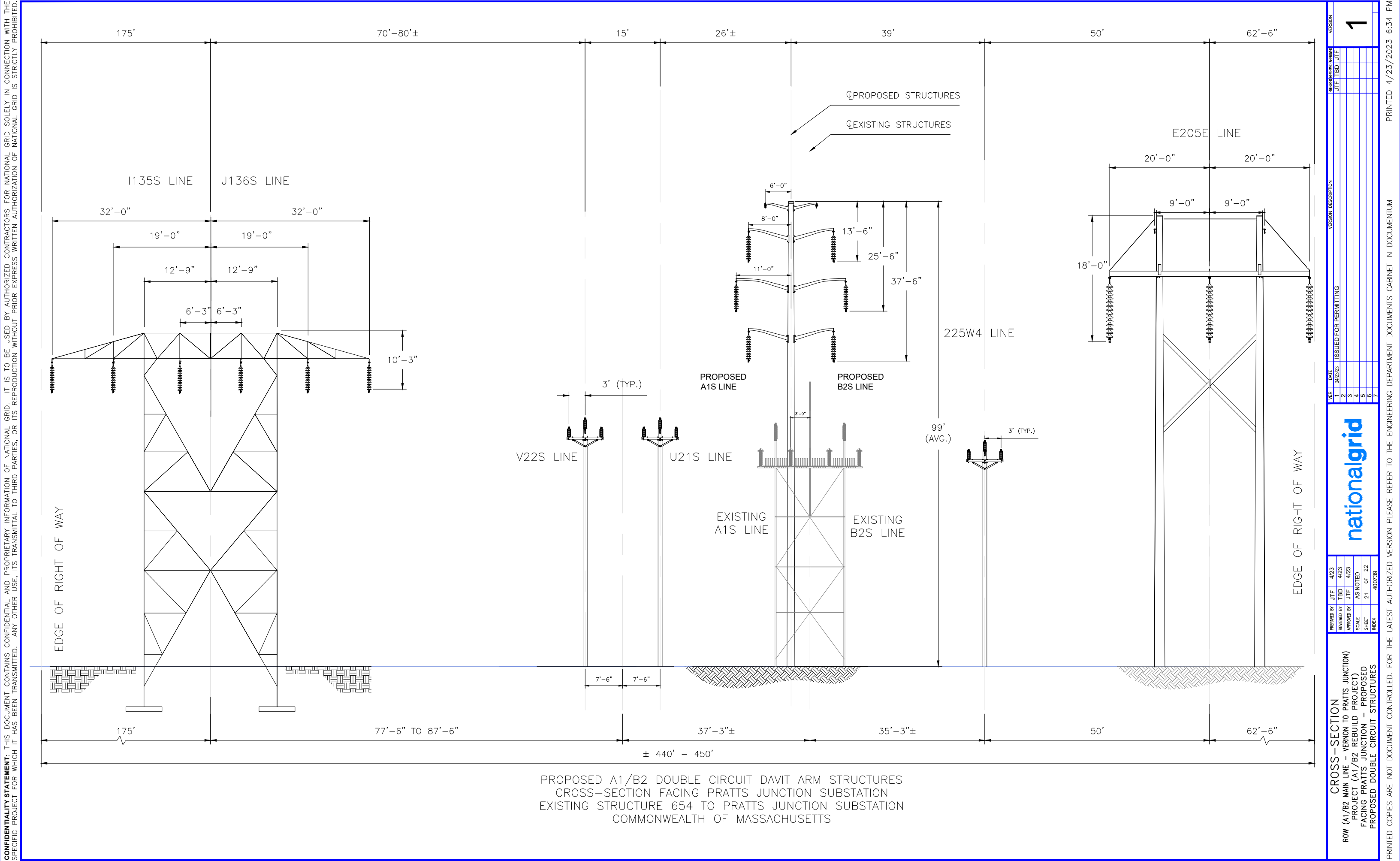
**CROSS-SECTION**  
 ROW (A1/B2 MAIN LINE - VERNON TO PRATTS JUNCTION)  
 PROJECT (A1/B2 REBUILD PROJECT)  
 FACING PRATTS JUNCTION - EXISTING  
 PROPOSED DOUBLE CIRCUIT STRUCTURES

**nationalgrid**

VER	DATE	ISSUED FOR PERMITTING	VERSION DESCRIPTION
1	04/23/23		
2			
3			
4			
5			
6			
7			

PREPARED BY: JTF, TBD, JTF  
 APPROVED BY: JTF, TBD, JTF

1



INCHES ON ORIGINAL